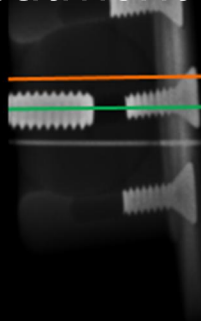


Upper Cervical
Chiropractic

NUCCA

Tools

Diagnostic tools for
optimal treatment



PL	1/4"
AT/OD	0
C/A	1,05
ANG	-

At	R 1/4° (L 1/2°)
Od	R 1/4°
BC	R 1/4°
Sp	R 3 1/4°
SpC	R 3 1/4°

Measurements

Lateral

S-Line	21,8°
HPL	+11,19°

Frontal/Nasium

Lat	R 0,24°
SkTip	L 0,4°
APL	0,6°
APL/ACL	L 0,16°
PL	+ 1/16"
BC	L 0°
Od	R 0° (0,1mm)
Sp-N	R 3° (2,5mm)
LA	L 0°
AR	(L 1/2°)
IML/CSL	L 0°

Vertex

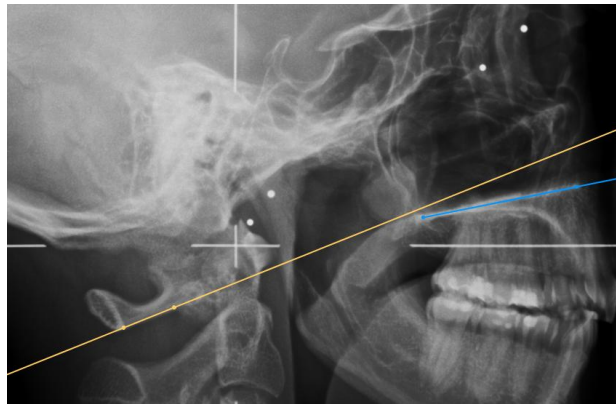
C1/C2	R 4,37°
Sp-V	R 2,9° (2,4mm)
AtlasRotation	A 1/4°

by OR Technology

The NUCCA tool set has been created in cooperation with leading NUCCA experts from the USA and Canada and offers great possibilities and flexibility for diagnosing accurately as well as for planning further treatment. As you are able to use templates like the cephalometer and relatoscope, you can continue working as you are used to.

S-Line and Hard Palate Line

You simply set two points each on C1 and the hard palate to create the S-Line and the Hard Palate Line. We will show you the horizontal aberrancies.



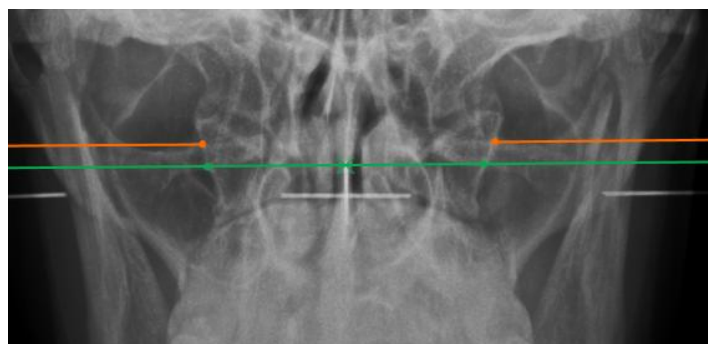
Raw data box

All measured values will be shown in the raw data box. You can also show and hide values manually.

Lateral	
S-Line	21,8°
HPL	+11,19°
Frontal/Nasium	
Lat	R 0,24°
SKTip	L 0,4°
APL	0,6°
APL/ACL	L 0,16°
PL	+ 1/16°
BC	L 0°
Od	R 0° (0,1mm)
Sp-N	R 3° (2,5mm)
LA	L 0°
AR	(L 1/2°)
IML/CSL	L 0°
Vertex	
C1/C2	R 4,37°
Sp-V	R 2,9° (2,4mm)
AtlasRotation	A 1/4°

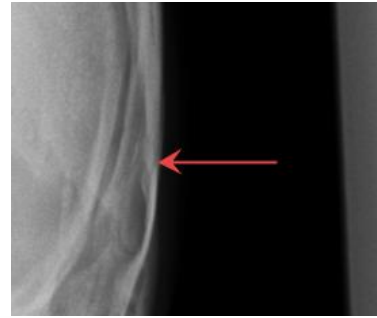
Atlas Plane Line and Atlas Check Line

The horizontal aberrancy and the angle between Atlas Plane Line and Atlas Check Line will be shown in the raw data box.



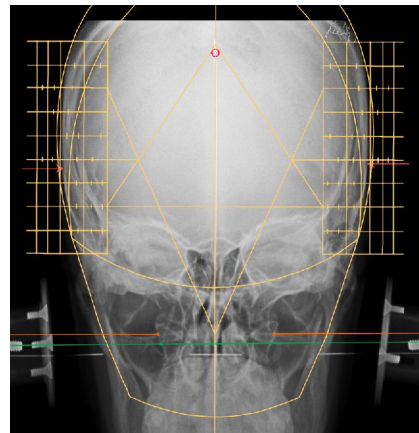
Squamous Sutures

You can mark as many lateral aspects of the skull as you wish and even change the appearance of the markers.



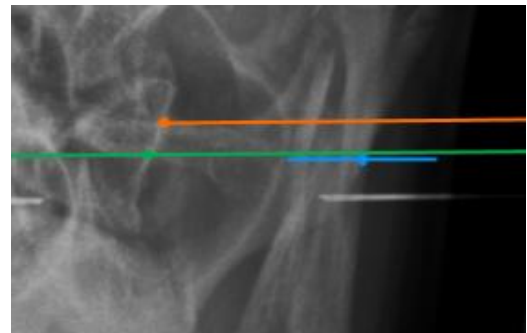
Cephalometer and Central Skull Line

Use the cephalometer to draw the Central Skull Line. Laterality and Skull Tippage will be calculated automatically. The Four Elements and Listing Information will be inserted.



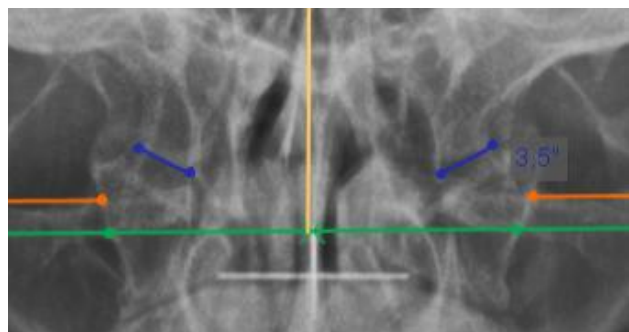
Plane Line

Set two points and the line will be shortened automatically. The distance to the Atlas Plane Line will be shown in the raw data box.



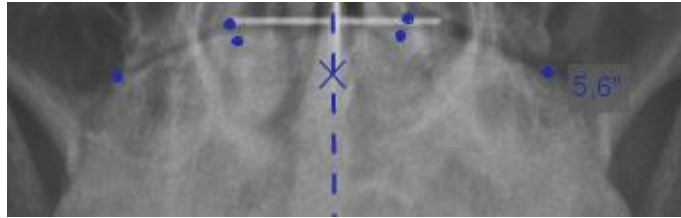
Condylar Circle

Choose between the three point and four point Condylar Circle. The middle point will be shown. You can set the calculated measurement manually to the value you prefer. The relatoscope will use the shown value.



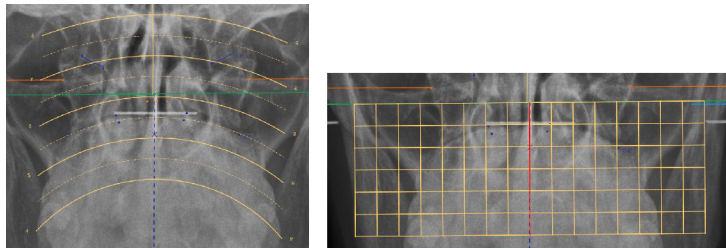
Axial Circle

The Body Center Line will be set automatically and the Axial Circle will be calculated and shown on the side of laterality. You can set the calculated measurement manually to the value you prefer.



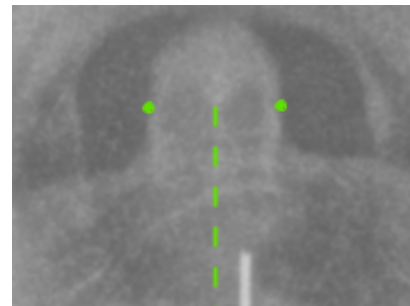
Circumscale and grid

Activate the circumscale or grid template to double check the measurements of Condylar and Axial Circle and to set the points of the Axial Circle properly.



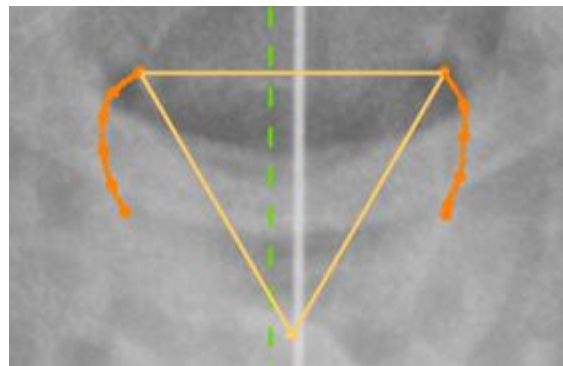
Odontoid Center on Vertex

Mark the lateral aspects of the dens and the Odontoid Center Line will be inserted.



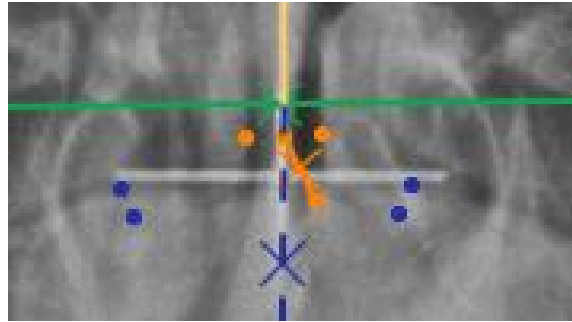
Vertex Square

After marking the C2 canal, the Vertex Square will be inserted and the Spinous value will be calculated depending on the Condylar Circle.



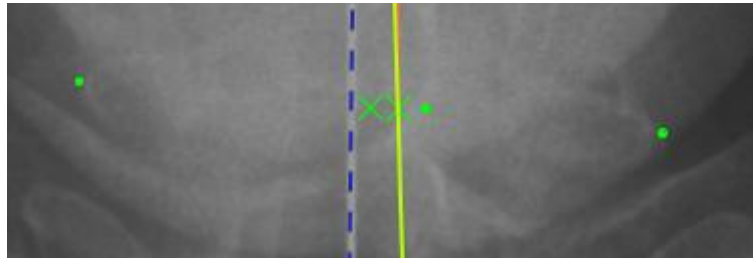
Odontoid, Spinous and Relatoscope

Use the relatoscope to apply the Spinous value from Vertex to Nasium view. Mark the lateral aspects of the dens and the (corrected) Odontoid will be inserted automatically.



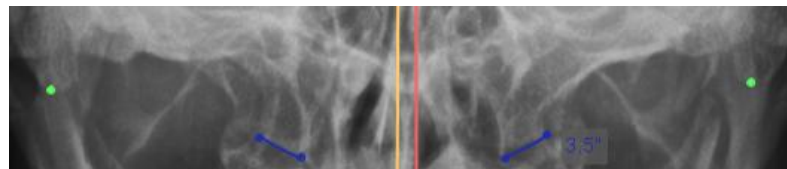
Lower Angle and Angular Rotation

The lower angle and angular rotation will be calculated automatically after setting the inferior point. You can also set a corrected inferior point.



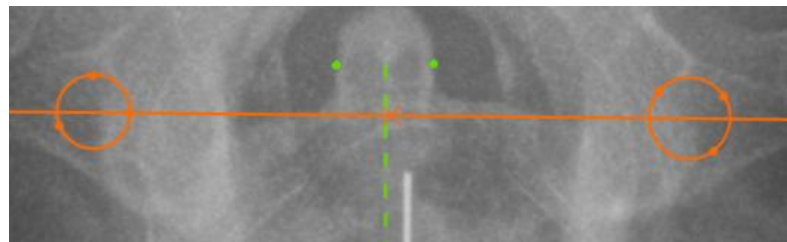
Intermastoid Line

Mark the inferior tips of the mastoid processes. The measured value, its aberrancy to the Central Skull Line will also appear in the raw data box.



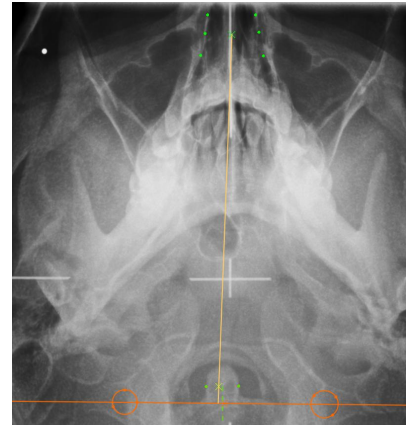
Vertex Atlas Line

After marking the transverse foramina of the Atlas with three points each, we will draw the Vertex Atlas Line and show the convergence of C1 and C2.



Vertex Skull Line

After marking the nasal structures, click the Inferior Point button. The point will be set automatically depending on the Listing Information value and the Vertex Skull Line will be inserted.



Four Elements and Listing Information

The Four Elements and Listing Information will be inserted on the opposite side and on the side of laterality and are completely editable.

PL	1/4"
AT/OD	0
C/A	1,05
ANG	-

At	R 1/4° (L 1/2°)
Od	R 1/4°
BC	R 1/4°
Sp	R 3 1/4°
SpC	R 3 1/4°

Annotation helpers

For every tool we created a little help window containing all steps and keyboard shortcuts you need to know. The window can be folded up and down and hidden completely.

