



**ULTRARAY**  
MEDICAL

## Radiation Protection Apparel & Accessories



**CMI**  
*Calico Medical*  
INCORPORATED

(519) 885-3254  
[office@calicomedical.com](mailto:office@calicomedical.com)

## A LEADER IN RADIATION PROTECTION SINCE 1985.

Ultraray Group Inc. is an ISO 9001:2015 Certified Manufacturer.



Ultraray Group Inc. is a Class 1 Health Canada Certified Manufacturer and Distributor operating under our Health Canada Medical Establishment License 2312.

Ultraray Group Inc. manufactures Canadian made products using the latest in technology while maintaining the highest safety standards.

Our products are manufactured using strict quality control procedures in accordance with Health Canada Medical Devices Regulations.

We welcome your ideas and suggestions as they result in the ongoing improvement & development of our products.

# SMARTID



**SmartID** is a revolutionary web-based inventory management system for radiation protection apparel. The system allows hospital staff members to access details on each radiation protection product in their inventory directly from their smartphone, tablet, or computer.

Each item is tagged with a unique QR code that can be scanned with your smartphone (or any device with a QR reader). Once the QR code has been scanned, staff members will have access to product details, a virtual image of the product and complete inspection reports for that product. Its that simple, no special software or equipment is required. Labels are provided at no cost and are located in a position that does not come into contact with your body.

# TABLE OF CONTENTS

GENERAL CATALOGUE INFORMATION POLICIES . PROGRAMS . LEAD PROTECTION OPTIONS	2-3
APRONS & ACCESSORIES APRONS . APRON OPTIONS . APRON ACCESSORIES . GLOVES	4-32
PROTECTIVE EYEWEAR RADIATION AND LASER PROTECTION LEADED GLASSES	33-39
PATIENT APRONS & ACCESSORIES PATIENT APRONS . PEDIATRIC APRONS . X-RAY ACCESSORIES . TABLE PADS . SIGNS	40-49
APRON RACKS WALL-MOUNTED & MOBILE APRON STORAGE RACKS . HANGERS . TABLE SCATTER SHIELD	50-55
BARRIERS & SHIELDS LEAD GLASS & CURTAIN BARRIERS . TABLE SHIELDS . LEAD VINYL SHEETS . BLANKETS	56-58

## Innovation, Reliability and Service

### 7 DAY SATISFACTION POLICY

Please contact us if you are not satisfied with your order and we will make every attempt to correct the problem. This policy is applicable to all standard products. Made-to-measure or custom made orders are subject to review.

### 30 DAY RETURN POLICY

Authorized returns are subject to a 25% restocking fee. Goods must be returned in their original condition and packaging. The end-user is responsible for shipping charges. Please contact us prior to any returns for a Return Merchandise Authorization Number. Goods returned without an RMA# will be refused.

### LIMITED WARRANTY POLICY

Our manufactured products come with a limited 2 year warranty against defects in workmanship and/or materials if accompanied by all their original manufacturing labels. Our distribution products are subject to their manufacturer's warranty policy. The end-user is responsible for warranty return shipping charges. Damage caused by misuse or neglect will void this warranty. Please contact us prior to any returns for a Return Merchandise Authorization Number. Goods returned without an RMA# will be refused.

### THE ENVIRONMENT

Many claims have been made regarding what constitutes an environmentally friendly apron.

#### Our Policy

An apron made with any attenuating product must be properly disposed of at the end of its cycle.

#### Our Assurance

Any Ultraray product returned to us, regardless of its core material, will be properly discarded.

#### Our Plan

Ultraray has implemented a responsible environmental policy within our administrative and manufacturing facilities by reducing, recycling or reusing all materials consumed in the process of conducting our business.

### RECYCLING PROGRAM

We will properly recycle a previously owned Ultraray apron at no-charge for every new apron purchased. For non-Ultraray aprons a recycling fee will apply. A bulk recycling program is available.



## THE ULTRARAY APRON Protection with Style and Comfort

YOUR CHOICE OF LEAD OR COMPOSITE CORE MATERIALS IN  
VARIOUS COMBINATIONS OF LEAD-EQUIVALENCIES.

### TrueLead



Certified .5mm LE @ 150KVP

**TrueLead** is composed of 100% lead core. It offers the highest level of protection, with a lead-equivalency of 0.5mm @ 150KVP. It is a good economical choice that provides excellent protection.

### UltraXTLite



Certified .5mm LE @ 130KVP

**UltraXTLite** is composed of a composite core. It is the best combination of weight, protection and economy available on the market. It offers a highly acceptable level of protection, with a lead-equivalency of 0.5mm @ 130KVP, at considerably less weight than TrueLead.

### CirrusEcoLite



Certified .5mm LE @ 100KVP

**CirrusEcoLite** is composed of a blend of lightweight materials and does not contain lead. It is the lightest material on the market today with a lead-equivalency of 0.5mm @ 100KVP. It is recommended you verify with your Radiation Safety Officer that this level of protection is acceptable at your facility.

## ADJUSTABLE FIT FRONTAL with VELCRO® Closure

- Easy on and off convenience.
- Adjustable VELCRO® arms provide excellent weight distribution and comfort.
- Built-in shoulder pads offer additional comfort.
- Adjustable shoulder strap prevents the apron from slipping.
- Optional elastic back provides the ultimate in support and fit.
- Optional no-charge pocket.
- Available in XS-XXL and Made-to-Measure.



Standard Back



Optional Elastic Back

Code	Description
BA1	TrueLead™
XBA1	Ultra XT Lite™
CBA1	Cirrus Eco Lite™
BA1-EB	TrueLead™ with Elastic Back
XBA1-EB	Ultra XT Lite™ with Elastic Back
CBA1-EB	Cirrus Eco Lite™ with Elastic Back

FRONTAL APRON SIZES			
SIZE	Actual Apron Width x Length	Shoulder Width	Max. Chest/Hip
X-Small	20" X 34"	14"	34"
Small	22" X 35"	14½"	38"
Medium	24" X 37"	16"	42"
Large	24" X 39"	18½"	44"
X-Large	26" X 41"	20½"	46"
XX-Large	28" X 43"	21½"	50"

Lead Options: p.3  
Apron Options: p.27

Fabric/Embroidery: p.22-26  
Apron Accessories: p.28-30



## ADJUSTABLE FIT FRONTAL

with Belt and Buckle

- Easy on and off convenience.
- Adjustable heavy-duty 2" web belt with quick-release buckle closure.
- Built-in shoulder pads offer additional comfort.
- Adjustable shoulder strap prevents the apron from slipping.
- Optional elastic back provides the ultimate in support and fit.
- Optional no-charge pocket.
- Available in XS-XXL and Made-to-Measure.



Standard Back

Optional Elastic Back

Code	Description
BA2	TrueLead™
XBA2	Ultra XT Lite™
CBA2	Cirrus Eco Lite™
BA2-EB	TrueLead™ with Elastic Back
XBA2-EB	Ultra XT Lite™ with Elastic Back
CBA2-EB	Cirrus Eco Lite™ with Elastic Back

FRONTAL APRON SIZES			
SIZE	Actual Apron Width x Length	Shoulder Width	Max. Chest/Hip
X-Small	20" X 34"	14"	34"
Small	22" X 35"	14½"	38"
Medium	24" X 37"	16"	42"
Large	24" X 39"	18½"	44"
X-Large	26" X 41"	20½"	46"
XX-Large	28" X 43"	21½"	50"



Lead Options: p.3  
Apron Options: p.27

Fabric/Embroidery: p.22-26  
Apron Accessories: p.28-30



## BACK SAVER FRONTAL

- Ideal for long procedures.
- Easy on and off convenience.
- Adjustable UltraLastik Belt or SuperBelt provides excellent weight distribution and comfort by transferring weight from shoulders to hips. Just shrug your shoulders and adjust the belly to a comfortable position.
- Built-in shoulder pads offer additional comfort.
- Adjustable shoulder strap prevents the apron from slipping.
- Optional no-charge pocket.
- Available in XS-XXL and Made-to-Measure.

Code	Description
BA3-UL	TrueLead™ with UltraLastik Belt
XBA3-UL	Ultra XT Lite™ with UltraLastik Belt
CBA3-UL	Cirrus Eco Lite™ with UltraLastik Belt
BA3-SB	TrueLead™ with SuperBelt
XBA3-SB	Ultra XT Lite™ with SuperBelt
CBA3-SB	Cirrus Eco Lite™ with SuperBelt

FRONTAL APRON SIZES			
SIZE	Actual Apron Width x Length	Shoulder Width	Max. Chest/Hip
X-Small	20" X 34"	14"	34"
Small	22" X 35"	14½"	38"
Medium	24" X 37"	16"	42"
Large	24" X 39"	18½"	44"
X-Large	26" X 41"	20½"	46"
XX-Large	28" X 43"	21½"	50"



UltraLastik



SuperBelt

Lead Options: p.3  
Apron Options: p.27

Fabric/Embroidery: p.22-26  
Apron Accessories: p.28-30



## O.R. DROP FRONTAL with Side Release

- Designed to release quickly under surgical gown without compromising the sterile field.
- Adjustable quick-release straps cross the back and VELCRO® securely to the front for a snug fit.
- Built-in shoulder pads offer additional comfort.
- Optional no-charge pocket.
- Available in XS-XXL and Made-to-Measure.



Code	Description
DA1	TrueLead™
XDA1	Ultra XT Lite™
CDA1	Cirrus Eco Lite™

FRONTAL APRON SIZES			
SIZE	Actual Apron Width x Length	Shoulder Width	Max. Chest/Hip
X-Small	20" X 34"	14"	34"
Small	22" X 35"	14½"	38"
Medium	24" X 37"	16"	42"
Large	24" X 39"	18½"	44"
X-Large	26" X 41"	20½"	46"
XX-Large	28" X 43"	21½"	50"



Lead Options: p.3  
Apron Options: p.27

Fabric/Embroidery: p.22-26  
Apron Accessories: p.28-30

## O.R. DROP FRONTAL with Top Release

- Designed to release quickly under surgical gown without compromising the sterile field.
- Adjustable quick-release VELCRO® shoulder tabs.
- Built-in shoulder pads offer additional comfort.
- Optional no-charge pocket.
- Available in XS-XXL and Made-to-Measure.



Quick-release back

Code	Description
DA2	TrueLead™
XDA2	Ultra XT Lite™
CDA2	Cirrus Eco Lite™

FRONTAL APRON SIZES			
SIZE	Actual Apron Width x Length	Shoulder Width	Max. Chest/Hip
X-Small	20" X 34"	14"	34"
Small	22" X 35"	14½"	38"
Medium	24" X 37"	16"	42"
Large	24" X 39"	18½"	44"
X-Large	26" X 41"	20½"	46"
XX-Large	28" X 43"	21½"	50"

Lead Options: p.3  
Apron Options: p.27

Fabric/Embroidery: p.22-26  
Apron Accessories: p.28-30



## O.R. DROP FRONTAL

with Top Release and Adjustable Flex Side Release

- Designed to release quickly under surgical gown without compromising the sterile field.
- Adjustable quick-release VELCRO® shoulder tabs.
- Adjustable VELCRO® arms with elastic back provide excellent weight distribution and comfort.
- Built-in shoulder pads offer additional comfort.
- Optional no-charge pocket.
- Available in XS-XXL and Made-to-Measure.



Elastic Back

Code	Description
DA3-EB	TrueLead™
XDA3-EB	Ultra XT Lite™
CDA3-EB	Cirrus Eco Lite™

FRONTAL APRON SIZES			
SIZE	Actual Apron Width x Length	Shoulder Width	Max. Chest/Hip
X-Small	20" X 34"	14"	34"
Small	22" X 35"	14½"	38"
Medium	24" X 37"	16"	42"
Large	24" X 39"	18½"	44"
X-Large	26" X 41"	20½"	46"
XX-Large	28" X 43"	21½"	50"



Lead Options: p.3  
Apron Options: p.27

Fabric/Embroidery: p.22-26  
Apron Accessories: p.28-30



## TRI-FLAP UROLOGY FRONTAL



- Urology specific tri-flap design.
- Criss-cross back.
- Adjustable heavy-duty 2" web belt with quick-release buckle closure.
- Built-in shoulder pads offer additional comfort.
- Adjustable shoulder strap prevents the apron from slipping.
- Optional elastic back provides the ultimate in support and fit.
- Optional no-charge pocket.
- Available in XS-XXL and Made-to-Measure.

Code	Description
URO	TrueLead™
XURO	Ultra XT Lite™
CURO	Cirrus Eco Lite™
URO-EB	TrueLead™ with Elastic Back
XURO-EB	Ultra XT Lite™ with Elastic Back
CURO-EB	Cirrus Eco Lite™ with Elastic Back



Standard Back



Optional Elastic Back

FRONTAL APRON SIZES			
SIZE	Actual Apron Width x Length	Shoulder Width	Max. Chest/Hip
X-Small	20" X 34"	14"	34"
Small	22" X 35"	14½"	38"
Medium	24" X 37"	16"	42"
Large	24" X 39"	18½"	44"
X-Large	26" X 41"	20½"	46"
XX-Large	28" X 43"	21½"	50"

Lead Options: p.3  
Apron Options: p.27

Fabric/Embroidery: p.22-26  
Apron Accessories: p.28-30

## PARTIAL OVERLAP

### Unisex Vest and Skirt

- Full protection in each panel.
- Adjustable center overlap design.
- Specified protection in each panel regardless of variations in overlap fit.
- Ideal for multiple users.
- Built-in shoulder pads offer additional comfort.
- Available in Mix & Match sizes XS-XL and Made-to-Measure.

Code	Description
SP2V	TrueLead™ Vest
XSP2V	Ultra XT Lite™ Vest
CSP2V	Cirrus Eco Lite™ Vest
SP2S	TrueLead™ Skirt
XSP2S	Ultra XT Lite™ Skirt
CSP2S	Cirrus Eco Lite™ Skirt

VEST SIZES - Unisex			
SIZE	Chest Size	Shoulders	Length
X-Small	30-33"	14½"	21"
Small	34-37"	15"	21"
Medium	38-41"	16"	22"
Large	42-45"	18"	24"
X-Large	46-49"	20"	25"

SKIRT SIZES - Unisex			
SIZE	Waist Size	Hip Size	Length
X-Small	24-27"	33-36"	19½"
Small	28-31"	37-40"	21"
Medium	32-35"	41-44"	22"
Large	36-39"	45-46"	23"
X-Large	40-43"	47-52"	24"



Lead Options: p.3  
Apron Options: p.27

Fabric/Embroidery: p.22-26  
Apron Accessories: p.28-30

## MIX & MATCH

### Full Overlap Vest & Skirt with VELCRO® Closure

- Full protection in a lighter apron. Lead weight is divided between the two fully overlapping front panels.

#### VEST - Male or Female

- Front VELCRO® closures assure a comfortable and secure fit.
- Inside buckle allows for easy VELCRO® alignment and prevents inner panel from sagging.
- Built-in shoulder pads offer additional comfort.
- Optional no-charge pocket.
- Optional no-charge outside buckles provide additional support for outside panel.
- Available in Mix&Match Male and Female sizes: XS-XXXL and Made-to-Measure.

#### SKIRT - Unisex

- Front VELCRO® closure and a heavy-duty 2" web belt and buckle assure a comfortable and secure fit.
- Hanging loops for safe storing.
- Optional pocket.
- Available in Mix & Match Unisex sizes: XS-XXXL and Made-to-Measure.



FRONT VIEW

Lead Options: p.3  
Apron Options: p.27

Fabric/Embroidery: p.22-26  
Apron Accessories: p.28-30



Code (Vest Male)	Code (Vest Female)	Description
SP2FWVM	SP2FWVF	TrueLead™
XSP2FWVM	XSP2FWVF	Ultra XT Lite™
CSP2FWVM	CSP2FWVF	Cirrus Eco Lite™
SP2FWVM-B	SP2FWVF-B	TrueLead™ with Buckles
XSP2FWVM-B	XSP2FWVF-B	Ultra XT Lite™ with Buckles
CSP2FWVM-B	CSP2FWVF-B	Cirrus Eco Lite™ with Buckles

Code (Skirt)	Description
SP2FWS	TrueLead™
XSP2FWS	Ultra XT Lite™
CSP2FWS	Cirrus Eco Lite™

## Sizing Chart

Please refer to page 22 for measurement guide.

VEST SIZES - Male			VEST SIZES - Female	
Size	Chest Size	Length	Chest Size	Length
X-Small	35-36"	23½"	33-34"	21"
Small	37-38"	24½"	35-36"	21½"
Medium	39-40"	25"	37-38"	22"
Large	41-42"	25½"	39-40"	22½"
X-Large	43-44"	26"	41-42"	23"
XX-Large	45-46"	26½"	43-44"	23½"
XXX-Large	47-48"	27"	45-46"	24"

SKIRT SIZES - Unisex			
Size	Waist Size	Hip Size	Length
X-Small	26-27"	33-34"	18"
Small	28-29"	35-36"	19"
Medium-1	30-31"	37-38"	21"
Medium-2	32-33"	39-40"	22"
Large-1	34-35"	41-42"	23"
Large-2	36-37"	43-44"	23"
X-Large	38-39"	45-46"	23"
XX-Large	40-41"	47-48"	23"
XXX-Large	42-43"	49-50"	24"



REAR VIEW

Lead Options: p.3  
Apron Options: p.27

Fabric/Embroidery: p.22-26  
Apron Accessories: p.28-30

## MIX & MATCH

Reverse Vest & Full Overlap Skirt with VELCRO® Closure



FRONT VIEW

### REVERSE VEST - Male or Female

- Reverse style offers maximum adjustment, comfort and support.
- Adjustable arms criss-cross the back of the apron and VELCRO® securely in front.
- Elastic back offers greater adjustment and provides comfort and support.
- Front closing adjustable shoulder flap.
- Built-in shoulder pads offer additional comfort.
- Optional no-charge pocket.
- Available in Male and Female sizes XS-XXXL and Made-to-Measure.

### SKIRT - Unisex

- Front VELCRO® closure and a heavy-duty 2" web belt and buckle assure a comfortable and secure fit.
- Hanging loops.
- Optional pocket.
- Available in Mix & Match Unisex sizes: XS-XXXL and Made-to-Measure.

Lead Options: p.3  
Apron Options: p.27

Fabric/Embroidery: p.22-26  
Apron Accessories: p.28-30

Code (Vest Male)	Code (Vest Female)	Description
MODM	MODF	TrueLead™
XMODM	XMODF	Ultra XT Lite™
CMODM	CMODF	Cirrus Eco Lite™

Code (Skirt)	
SP2FWS	TrueLead™
XSP2FWS	Ultra XT Lite™
CSP2FWS	Cirrus Eco Lite™

## Sizing Chart

Please refer to page 22 for measurement guide.

VEST SIZES - MALE			VEST SIZES - FEMALE	
Size	Chest Size	Length	Chest Size	Length
X-Small	35-36"	23½"	33-34"	21"
Small	37-38"	24½"	35-36"	21½"
Medium	39-40"	25"	37-38"	22"
Large	41-42"	25½"	39-40"	22½"
X-Large	43-44"	26"	41-42"	23"
XX-Large	45-46"	26½"	43-44"	23½"
XXX-Large	47-48"	27"	45-46"	24"

SKIRT SIZES - Unisex			
SIZE	Waist Size	Hip Size	Length
X-Small	26-27"	33-34"	18"
Small	28-29"	35-36"	19"
Medium-1	30-31"	37-38"	21"
Medium-2	32-33"	39-40"	22"
Large-1	34-35"	41-42"	23"
Large-2	36-37"	43-44"	23"
X-Large	38-39"	45-46"	23"
XX-Large	40-41"	47-48"	23"
XXX-Large	42-43"	49-50"	24"



REAR VIEW

Lead Options: p.3  
Apron Options: p.27

Fabric/Embroidery: p.22-26  
Apron Accessories: p.28-30





## PARTIAL OVERLAP COAT with Three Belt Options

- Full protection in each panel.
- Adjustable center overlap design.
- Specified protection in each panel regardless of variations in overlap fit.
- Ideal for multiple users.
- Built-in shoulder pads offer additional comfort.
- Three belt options: 2" Web Belt, UltraLastik and SuperBelt.
- Available in XS-XL and Made-to-Measure.

Code	Description
SP1	TrueLead™ with 2" Web Belt
XSP1	Ultra XT Lite™ with 2" Web Belt
CSP1	Cirrus Eco Lite™ with 2" Web Belt
SP1-UL	TrueLead™ with UltraLastik Belt
XSP1-UL	Ultra XT Lite™ with UltraLastik Belt
CSP1-UL	Cirrus Eco Lite™ with UltraLastik Belt
SP1-SB	TrueLead™ with SuperBelt
XSP1-SB	Ultra XT Lite™ with SuperBelt
CSP1-SB	Cirrus Eco Lite™ with SuperBelt



UL Back



SB Back

PARTIAL OVERLAP COAT SIZES					
Size	Chest	Shoulders	Hip	Front Length	Rear Length
X-Small	29-32"	13"	34-37"	34"	32"
Small	33-36"	13½"	38-41"	36"	34"
Medium	37-40"	15½"	42-45"	38"	36"
Large	41-44"	17½"	46-49"	40"	38"
X-Large	45-48"	19½"	50-53"	42"	40"

Lead Options: p.3  
Apron Options: p.27

Fabric/Embroidery: p.22-26  
Apron Accessories: p.28-30



## FULL OVERLAP COAT

### with Two Belt Options

- Full protection in a lighter apron. Lead weight is divided between the two fully overlapping front panels.
- Adjustable frontal VELCRO® closures assure a comfortable and secure fit.
- Inside buckle allows for easy VELCRO® alignment and prevents inner panel from sagging.
- Built-in shoulder pads offer additional comfort.
- Optional no-charge chest pocket.
- Optional no-charge outside buckles provide additional support for outside panel.
- Ultralastik and SuperBelt. Two back support belt options move weight from shoulders to hips.
- Available in Unisex XS-XXL and Made-to-Measure.

Code	Code (with buckles)	Description
SP1FW-UL	SP1FW-UL-B	TrueLead™ with UltraLastik Belt
XSP1FW-UL	XSP1FW-UL-B	Ultra XT Lite™ with UltraLastik Belt
CSP1FW-UL	CSP1FW-UL-B	Cirrus Eco Lite™ with UltraLastik Belt
SP1FW-SB	SP1FW-SB-B	TrueLead™ with SuperBelt
XSP1FW-SB	XSP1FW-SB-B	Ultra XT Lite™ with SuperBelt
CSP1FW-SB	CSP1FW-SB-B	Cirrus Eco Lite™ with SuperBelt

FULL OVERLAP COAT SIZES					
Size	Chest	Hip	Shoulders	Front Length	Rear Length
X-Small	33-35"	38"	14½"	35"	33½"
Small	36-38"	40"	15½"	36½"	35"
Medium-1	39-41"	43"	16"	38½"	37"
Medium-2	42-44"	46"	16"	38½"	37"
Large	45-46"	49"	17"	41"	39"
X-Large	47-48"	52"	17"	42½"	41"
XX-Large	49-50"	54"	17"	44"	42"



Lead Options: p.3  
Apron Options: p.27

Fabric/Embroidery: p.22-26  
Apron Accessories: p.28-30

## STRETCH BACK

### Reverse Coat

- Reverse style offers maximum adjustment, comfort and support.
- Adjustable arms criss-cross the back of the apron and VELCRO® securely in front.
- Elastic back offers greater adjustment and provides comfort and support.
- Front closing adjustable shoulder flap.
- Built-in shoulder pads offer additional comfort.
- Optional no-charge pocket.
- Available in Unisex sizes S-XL and Made-to-Measure.



Built-in Elastic Back

Code		Description
SP4		TrueLead™
XSP4		Ultra XT Lite™
CSP4		Cirrus Eco Lite™

STRETCH BACK REVERSE COAT SIZES					
Size	Chest	Waist	Hip	Front Length	Rear Length
Small	33-36"	34-37"	35-38"	36"	34"
Medium	37-40"	38-41"	39-42"	38"	36"
Large	41-44"	42-45"	43-46"	40"	38"
X-Large	45-48"	46-50"	47-50"	42"	40"

Lead Options: p.3  
Apron Options: p.27

Fabric/Embroidery: p.22-26  
Apron Accessories: p.28-30



## DIAMOND BACK COAT

- Reverse entry coat with rear closure.
- Belt pulls through side and fastens in the front for easy adjustment.
- Accommodates a wide range of sizes due to pull through belt design.
- No VELCRO® to line up and attach.
- Adjustable shoulder strap.
- Built-in shoulder pads offer additional comfort.
- Optional no-charge pocket.
- Available in S-XL and Made-to-Measure.



Pull-Through Back

Code	Description
SP5	TrueLead™
XSP5	Ultra XT Lite™
CSP5	Cirrus Eco Lite™

DIAMOND BACK COAT SIZES					
Size	Chest	Waist	Hip	Front Length	Rear Length
Small	33-36"	34-37"	35-38"	36"	34"
Medium	37-40"	38-41"	39-42"	38"	36"
Large	41-44"	42-45"	43-46"	40"	38"
X-Large	45-48"	46-50"	47-50"	42"	40"



Lead Options: p.3  
Apron Options: p.27

Fabric/Embroidery: p.22-26  
Apron Accessories: p.28-30



## COMFORT WRAP COAT

- Wrap-around style.
- Offers protection with a full frontal overlap and over-the-shoulder closure.
- Built-in inside buckle prevents inner panel from sagging.
- Minimized VELCRO® attachment allows easy on and off convenience, while maximizing wearer's comfort.
- Built-in shoulder pads offer additional comfort.
- The attached UltraLastic belt, when properly adjusted, moves the majority of the weight from the shoulders to the hips.
- Optional no-charge pocket.
- Available in S-XL.

Code	Description
SP6-UL	TrueLead™ with UltraLastik Belt
XSP6-UL	Ultra XT Lite™ with UltraLastik Belt
CSP6-UL	Cirrus Eco Lite™ with UltraLastik Belt
SP6-SB	TrueLead™ with SuperBelt
XSP6-SB	Ultra XT Lite™ with SuperBelt
CSP6-SB	Cirrus Eco Lite™ with SuperBelt



UL Back



SB Back

COMFORT WRAP COAT SIZES					
Size	Chest	Waist	Hip	Front Length	Rear Length
Small	33-36"	34-37"	35-38"	36"	34"
Medium	37-40"	38-41"	39-42"	38"	36"
Large	41-44"	42-45"	43-46"	40"	38"
X-Large	45-48"	46-50"	47-50"	42"	40"

Lead Options: p.3  
Apron Options: p.27

Fabric/Embroidery: p.22-26  
Apron Accessories: p.28-30



## ECONOMY FRONTAL

with Tie-Strap Closure

- 1" straps cross the back and tie securely at the front.
- Easy on and off convenience.
- Optional no-charge pocket.
- Available in XS-XXL.



Tie-Strap Back

Code	Description
EC	True Lead™

FRONTAL APRON SIZES			
SIZE	Actual Apron Width x Length	Shoulder Width	Max. Chest/Hip
X-Small	20" X 34"	14"	34"
Small	22" X 35"	14½"	38"
Medium	24" X 37"	16"	42"
Large	24" X 39"	18½"	44"
X-Large	26" X 41"	20½"	46"
XX-Large	28" X 43"	21½"	50"



Lead Options: p.3  
Apron Options: p.27

Fabric/Embroidery: p.22-26  
Apron Accessories: p.28-30

## Basic Lettering

- Basic Lettering is available in three type styles (block, brush script, and athletic block).
- Letter is very useful for identifying an apron to a specific department, clinic or individual.

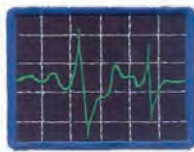
<b>Dr. Francis Smart</b>	<b>Block</b>	<b>Diagnostic Imaging</b>
<i>Dr. Francis Smart</i>	<b>Script</b>	<i>Diagnostic Imaging</i>
<b>Dr. Francis Smart</b>	<b>Athletic</b>	<b>Diagnostic Imaging</b>

## Custom Embroidery and Stock Designs

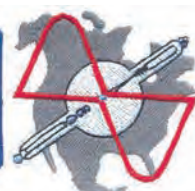
- A logo or design specific to your facility will further enhance the product and clearly identify it.
- Each logo, based on its design and size, must be quoted. A one-time disk setup charge applies on custom embroidery. Stock designs are not subject to a setup charge.



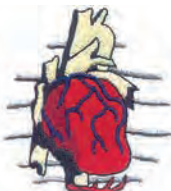
EMB-1



EMB-2



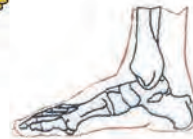
EMB-3



EMB-4



EMB-5



EMB-6



EMB-7



EMB-8



EMB-9



EMB-10



EMB-11



EMB-12



EMB-13



EMB-14



EMB-15



EMB-16



EMB-17



EMB-18



EMB-19



EMB-20



EMB-21



EMB-22



EMB-23



EMB-24



EMB-25



EMB-26



EMB-27



EMB-28



**Standard Fabric**



Teal



Turquoise



Forest Green



Light Green



Black



Navy



Royal Blue



Medium Blue



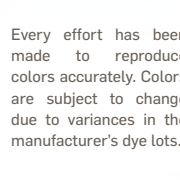
Charcoal



Purple



Royal Purple



White



Khaki



Hot Pink



Fuschia



Berry



Sport Yellow



Orange



Red

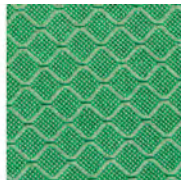


Burgundy

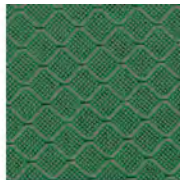
Every effort has been made to reproduce colors accurately. Colors are subject to change due to variances in the manufacturer's dye lots.

**RipStop Fabric**

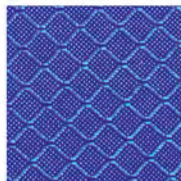
(Upgrade Charge)



Kelly Green



Fir



Royal Blue



Navy



Purple



Black



Cinnamon



Grey



Red



Tan

**Apron and Curtain Vinyl**



Royal Blue



Yellow



White



Black



Grey



Beige

**Tablepad Vinyl**



Black



Grey



Royal Blue



## Designer Fabric

(Upgrade Charge)



Tropical Dream



Sweet Pea Pink



Sweet Pea Green



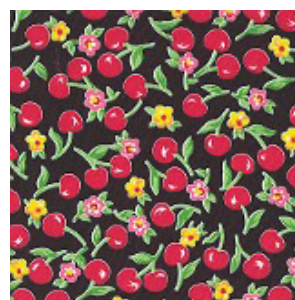
Mardi Gras



Maui Green



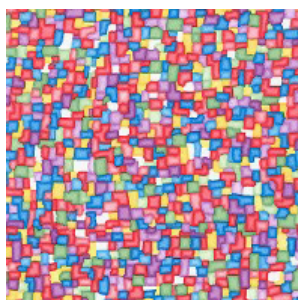
Maui Black



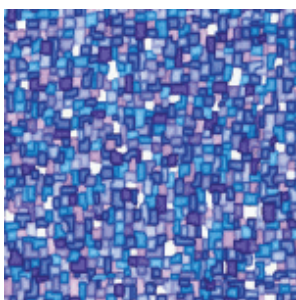
Cherries



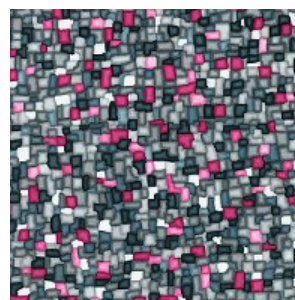
Tahiti



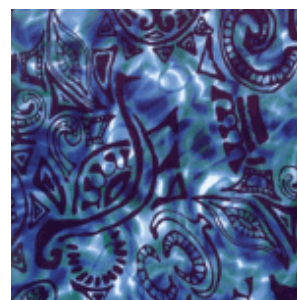
Rainbow Chicklets



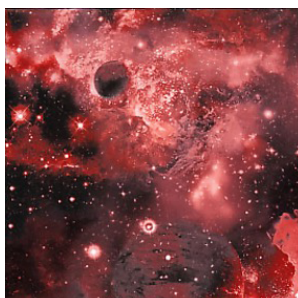
Blue Chicklets



Black Chicklets



Surf



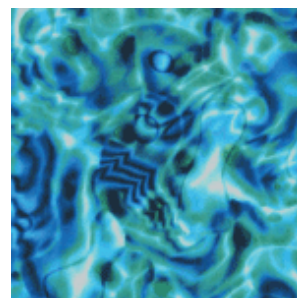
Galaxy Red



Galaxy Royal



Galaxy Multi



H2O





Blue Camo



Navy Camo



Green Camo



Pink Camo



Desert Storm Camo



Digi Camo



Mystery Multi



Mystery Blues



Navy Plaid



Green Plaid



London Plaid



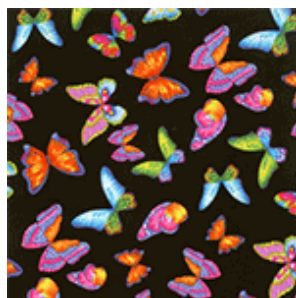
Pink Plaid



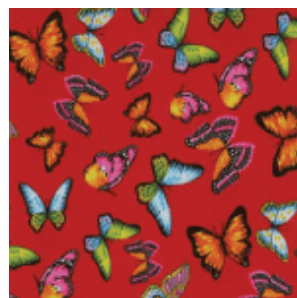
Purple Flames



Red Flames

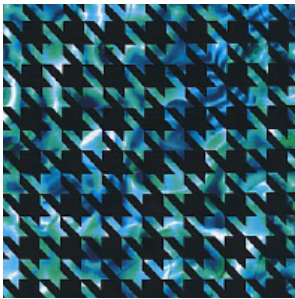


Black Butterflies

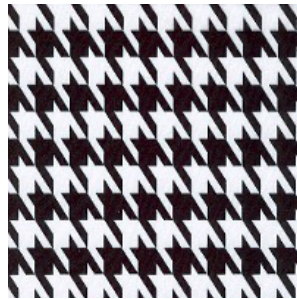


Red Butterflies

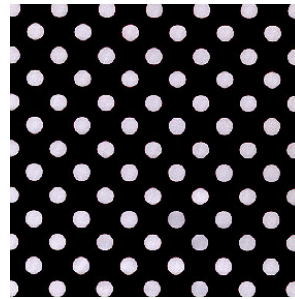




Blue Houndstooth



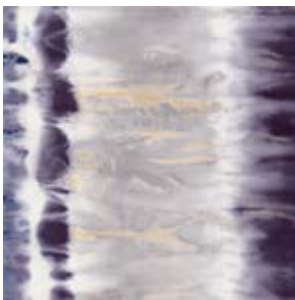
Black Houndstooth



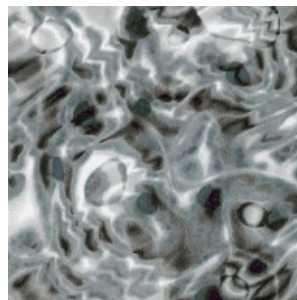
Polka Dots



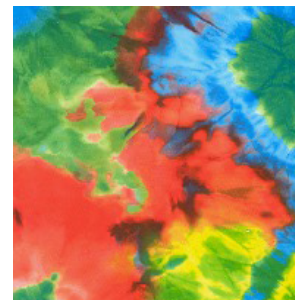
Abstract Greys



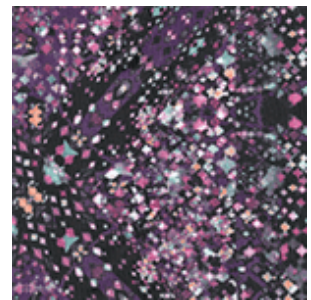
Cascata X-Ray



Dark Waters



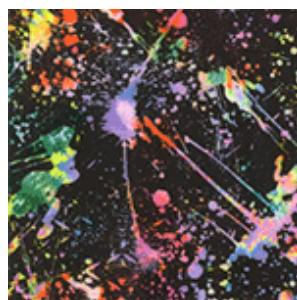
Tie Dye



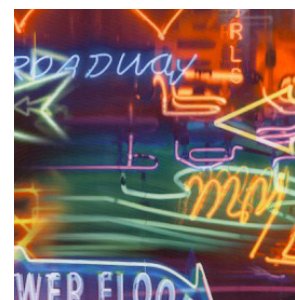
Prismatic Purples



Rainbow ZigZag



Paint Splash



Neon Signs



Vegas



Denim



Tattoo Hearts



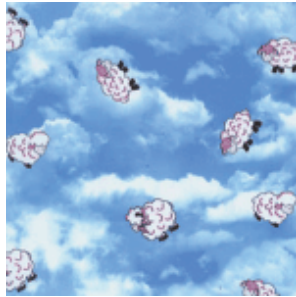
Tattoo Dragons



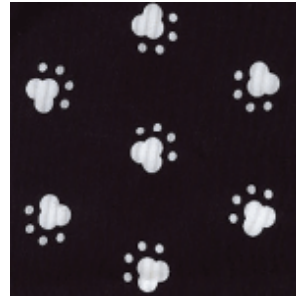
Skulls



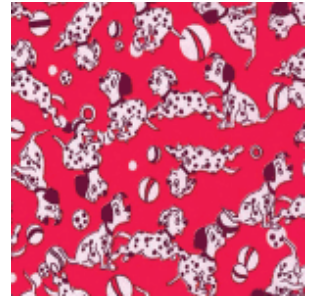
Animooos



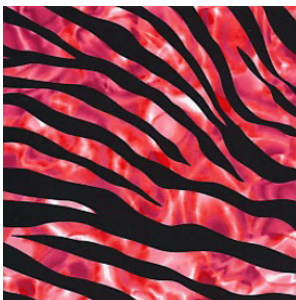
Sheep



Dog Prints



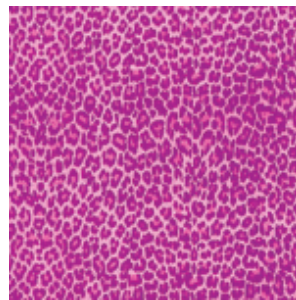
Dalmatians



Red Zebra



Leopard



Baby Panther Pink



Hearts of Colour

## Binding Colors

(Black is Standard)



Red



Purple



Royal Blue



Navy Blue



Canadian Blue



Light Green



Forest Green



Sport Yellow



Lemon Yellow



Hot Pink



Burgundy



Orange



Dark Grey

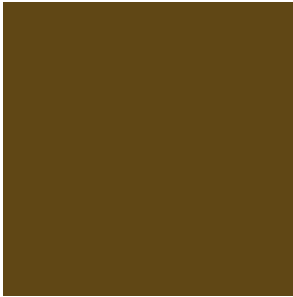


Black

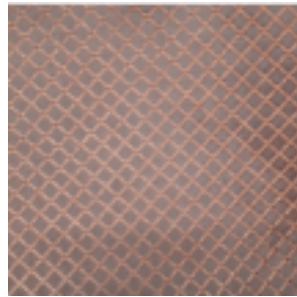


## Limited Edition Fabrics

Available for a limited time while supplies last. Please confirm availability before ordering.



Brown



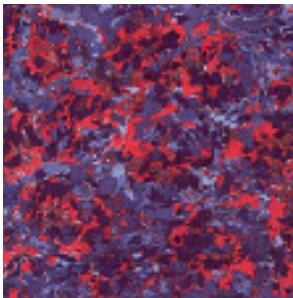
Ripstop Brown



Jeans



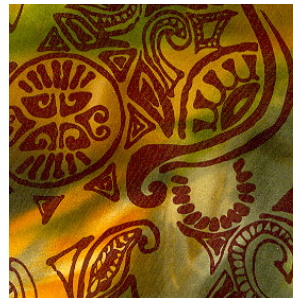
Mantis Green



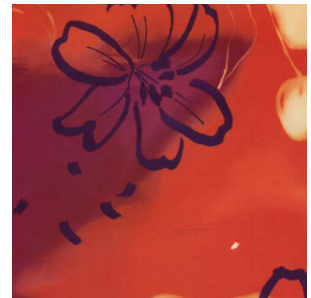
Granite Blue & Red



Green Surf



Tiki Green



Orange Floral



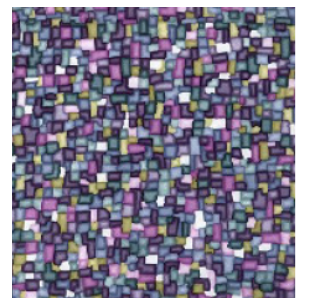
Bermuda Post Card



Blue Hibiscus



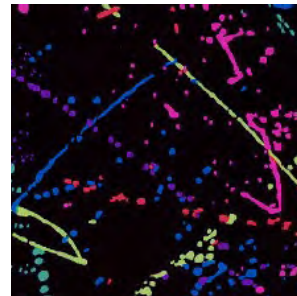
Tiki Island



Purple Chicklets



Surf Wax



Retro Paint Splash



Red/Blue Plaid



Shown Here:

FU-DF  
(Fabric Upgrade)

EMB-M (Monogram)

PC (Chest Pocket)

SL-SE  
(Sewn-on Sleeve)



Shown Here:

FU-DF  
(Fabric Upgrade)

EMB-SD (Stock Design)

PC (Chest Pocket)

AS-SE  
(Sewn-on Arm Shield)



## Pregnancy Panel

- Designed to be worn under any apron style to provide extra protection for the growing fetus.
- 24"W x 16"L pear shaped panel with adjustable Velcro belt closure (belt 58"L).
- MTM sizes available.
- Available in all fabric options.
- Two hanging loops for convenience.

## Embroidery

Code	Description
EMB-M	Embroidery - Monogram (One charge per Location)
EMB-NT	Embroidery - VELCRO® Name Tag (One charge per Location)
EMB-SD	Embroidery - Stock Design - (XX) Provide Number
EMB-CD	Embroidery - Custom Designs / Logos
EMB-DIG	Embroidery - Digitizing of Custom Designs / Logos

## Pockets

Code	Description
PC	Pockets - Chest
PSH	Pockets - Skirt / Hip / Other
PD	Pockets - Dosimeter

## Arm Shields / Sleeves

Code	Description
AS-SE	Arm Shields - Sewn-on
AS-SN	Arm Shields - Removable with Snaps
AS-CES	Arm Shields - Sewn-on - Cirrus Eco Lite™
AS-CSN	Arm Shields - Removable with Snaps - Cirrus Eco Lite™
SL-SE	Sleeves - Standard 10"/11"/12" Sewn-on
SL-SN	Sleeves - Standard 10"/11"/12" Removable with Snaps
SL-CSE	Sleeves - Standard 10"/11"/12" Sewn-on - Cirrus Eco Lite™
SL-CSN	Sleeves - Standard 10"/11"/12" Removable with Snaps - Cirrus Eco Lite™
SLC-SE	Sleeves - Custom Sewn-on
SLC-SN	Sleeves - Custom Removable with Snaps

## Misc. Options

Code	Description
RUSH	Rush Charge
FU-DF	Fabric Upgrade - Designer Fabric (Rip Stop or Designer from Chart)
FU-PP	Fabric Upgrade - Pick-your-own-print Selections
SCT	Safety - Certification Tags / Grommets / ApronChek Button Boxes
NCM	No Charge Modifications (See MTM / Modification Details Chart)
CMM	Chargeable Minor Modifications (See MTM / Modification Details Chart)
MTM	Made-to-Measure or Plus sizes (See MTM / Modification Details Chart)
LU	Lead Upgrade - 0.5mm in back of Vest & Skirt / Coat or 0.1mm in Frontal
LDAO	Lead Downgrade - Applies to Apron Cost Only
TSC	Thyroid Shield Cover - Black only. Fits Standard Thyroid shield
PPB	Pregnancy Panel (24" wide x 16" long) with VELCRO® Belt
PPB-CUST	Custom size Pregnancy Panel with VELCRO® Belt

## Head Caps

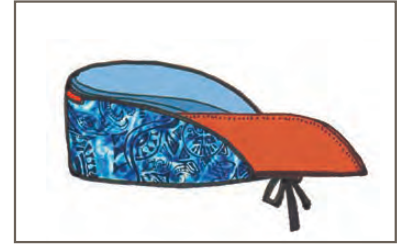
- Protection for your head against scatter radiation.
- Various style, lead type, and equivalency options.

### HCS, XHCS, CHCS

- Scrub style head cap.
- Top and side circumference protection.
- Optional left or right ear flap for both left and right ear flap (-E).

### HCSI, XHCSI, CHCSI

- Washable head cap with removable lead insert.
- Side circumference protection with cool mesh top.
- Optional left or right ear flap for both left and right ear flap (-E).



Above: Lead insert (orange) can slide in and out easily.



Above: HCSI (blue) with removable lead insert (orange). Once separated, head cap can be hand-washed.

Codes			Description
True Lead	XT Lite	Cirrus	
N/A	XHCS-125	N/A	Head Cap Scrub Style - .125mm top and side protection
HCS-25	XHCS-25	CHCS-25	Head Cap Scrub Style - .25mm top and side protection
HCS-50	XHCS-50	CHCS-50	Head Cap Scrub Style - .50mm top and side protection
N/A	XHCSI-125	N/A	Head Cap Scrub Style - .125mm side protection with insert
HCSI-25	XHCSI-25	CHCSI-25	Head Cap Scrub Style - .25mm side protection with insert
HCSI-50	XHCSI-50	CHCSI-50	Head Cap Scrub Style - .50mm side protection with insert
N/A	XHCS-125E	N/A	Head Cap Scrub Style with Ear Flap - .125mm top and side protection
HCS-25E	XHCS-25E	CHCS-25E	Head Cap Scrub Style with Ear Flap - .25mm top and side protection
HCS-50E	XHCS-50E	CHCS-50E	Head Cap Scrub Style with Ear Flap - .50mm top and side protection
N/A	XHCS-125E	N/A	Head Cap Scrub Style with Ear Flap - .125mm side protection with insert
HCSI-25E	XHCSI-25E	CHCSI-25E	Head Cap Scrub Style with Ear Flap - .25mm side protection with insert
HCSI-50E	XHCSI-50E	CHCSI-50E	Head Cap Scrub Style with Ear Flap - .50mm side protection with insert



HCS-25



HCSI-25

## Apron Carry Bag

- Constructed of 400 denier nylon, this bag will safely transport your apron.

Code	Description
CB-R	Apron Carry Bag - Regular
CB-L	Apron Carry Bag - Large





## Thyroid Shields



TSR



TSR-IT



TSB



TSM



TSV

- 0.50mm Lead Equivalent protection. Available in all fabric colors.
- Can be ordered Loose or with Six attachment styles: Sewn-on (integrated), Tethered with Strap, with Buckle, with VELCRO®, with Metal Rings, or with Plastic Tie-Wraps.
- TSR: Standard Thyroid Shield. Our most popular shield.
- TSB: "BIB" Thyroid Shield. No top binding for added comfort. Maximum coverage for wider neckline.
- TSM: Mammography Thyroid Shield. Protects the thyroid gland with minimal interference.
- TSV: Visor-style Thyroid Shield. Available in two options: front/side protection or full circumference protection.
- TSS: First quality TSRs (Standard Thyroid Shields). No style or colour choice.

Codes			Description
True Lead	XT Lite	Cirrus	
TSR-IT	XTSR-IT	CTSR-IT	Thyroid Shield - Sewn-on Integrated
TSS	TSS	TSS	Thyroid Shield - Random Colors from Stocks
TSRL	XTSRL	CT SRL	Thyroid Shield - Standard Loose
TSRT	XTSRT	CT SRT	Thyroid Shield - Standard Tethered
TSRB	XTSRB	CT SRB	Thyroid Shield - Standard Tethered with Buckle
TSRV	XTSRV	CT SRV	Thyroid Shield - Standard Tethered with VELCRO®
TSRR	XTSRR	CT SRR	Thyroid Shield - Standard Tethered with Metal Rings
TSRP	XTSRP	CT SRP	Thyroid Shield - Standard Tethered with Plastic Tie-Wraps
TSBL	XTSBL	CT SBL	Thyroid Shield - No Top Binding Bib Loose
TSBT	XTSBT	CT SBT	Thyroid Shield - No Top Binding Bib Tethered
TSBB	XTSBB	CT SBB	Thyroid Shield - No Top Binding Bib Tethered with Buckle
TSBV	XTSBV	CT SBV	Thyroid Shield - No Top Binding Bib Tethered with VELCRO®
TSBR	XTSBR	CT SBR	Thyroid Shield - No Top Binding Bib Tethered with Metal Rings
TSBP	XTSBP	CT SBP	Thyroid Shield - No Top Binding Bib Tethered with Plastic Tie-Wraps
TSM	XTSM	CT SM	Thyroid Shield - Mammography
TSVL	XTSVL	CT SVL	Thyroid Shield - Visor style Loose
TSVT	XTSVT	CT SVT	Thyroid Shield - Visor style Tethered
TSVB	XTSVB	CT SVB	Thyroid Shield - Visor style Tethered with Buckle
TSVV	XTSVV	CT SVV	Thyroid Shield - Visor style Tethered with VELCRO®
TSVR	XTSVR	CT SVR	Thyroid Shield - Visor style Tethered with Metal Rings
TSVP	XTSVP	CT SVP	Thyroid Shield - Visor style Tethered with Plastic Tie-Wraps

Lead Options: p.3

Fabric/Embroidery: p.22-26

## Velcro Closure Spinal Belt

- Ultraslim lightweight breathable coolmesh fabric. Comes with double side pull compression straps and 4 contoured steel stays.



Code	Velcro Closure Spinal Belt
SV-U	25-37" (65-94cm) Waist, Universal
SV-XL	37-49" (94-125cm) Waist, X-Large
SV-2XL	49-60" (125-154cm) Waist, 2X-Large

Code	Velcro Closure Spinal Belt with Strap & Ring
SVS-U	25-37" (65-94cm) Waist, Universal
SVS-XL	37-49" (94-125cm) Waist, X-Large
SVS-2XL	49-60" (125-154cm) Waist, 2X-Large

## SuperBelt



## UltraLastik Belt



- Equipped with an adjustable 2" belt and buckle system, the UltraLastik™ Belt helps to shift the weight from your shoulders to your waist, as well as effectively supporting your back. Available in six sizes (XS-XXL).

Code	UltraLastik Belt
ULB-XS	X-Small 24-28" Waist
ULB-S	Small 29-33" Waist
ULB-M	Medium 34-38" Waist
ULB-L	Large 39-43" Waist
ULB-XL	X-Large 44-48" Waist
ULB-XXL	XX-Large 49-53" Waist
ULB-CUST	Custom size UltraLastik Belt

Code	UltraLastik Belt with Strap & Ring
ULBS-XS	X-Small 24-28" Waist
ULBS-S	Small 29-33" Waist
ULBS-M	Medium 34-38" Waist
ULBS-L	Large 39-43" Waist
ULBS-XL	X-Large 44-48" Waist
ULBS-XXL	XX-Large 49-53" Waist
ULBS-CUST	Custom size UltraLastik Belt

- Felt lining for comfort. Tear resistant nylon exterior "Pulley" system cinches the belt.
- Available in six sizes (S-XXXL).

Code	SuperBelt
SB-S	Small 25-30" Waist
SB-M	Medium 30-35" Waist
SB-L	Large 35-40" Waist
SB-XL	X-Large 40-45" Waist
SB-XXL	XX-Large 45-50" Waist
SB-XXXL	XXX-Large 50-55" Waist

Code	SuperBelt with Strap & Ring
SBS-S	Small 25-30" Waist
SBS-M	Medium 30-35" Waist
SBS-L	Large 35-40" Waist
SBS-XL	X-Large 40-45" Waist
SBS-XXL	XX-Large 45-50" Waist
SBS-XXXL	XXX-Large 50-55" Waist



## Open Hand Shield

- This shield resembles a paddle with a cuff. It is used to protect the top of the hand. One-size fits all with a lead-equivalency of 0.5mm.

Code	Description
GL-OH	Open Hand Shield



## Open Palm Mitts

- These mitts are primarily designed for veterinary applications where fingers and thumbs are available to be used in a procedure. One-size fits all with a lead-equivalency of 0.5mm.

Code	Description
GL-OP	Open Palm Mitts



## Open Palm with Thumb

- Identical to the Open-Palm Mitt with a closed thumb. One-size fits all with a lead-equivalency of 0.5mm.

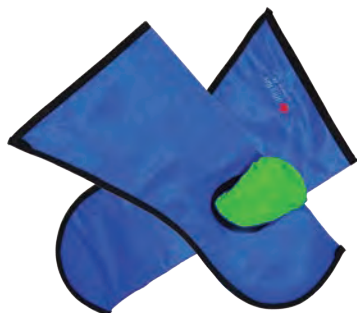
Code	Description
GL-OPT	Open Palm Mitts with Thumb



## Ducky Mitts

- These mitts are primarily designed for veterinary applications where fingers and thumbs must be protected. One-size fits all with a lead-equivalency of 0.5mm.

Code	Description
GL-DM	Ducky Mitts



## Closed Mitts with Thumb

- Similar to the Ducky Mitt without the finger pouch. One-size fits all with a lead-equivalency of 0.5mm.

Code	Description
GL-DMT	Ducky Mitts with Thumb

Standard Colour: Royal Blue  
Optional colors are available.

\* Different colors shown are for delineation purposes only.



## Oven Style Mitts

An oven style mitt that offers 360° protection. One-size fits all with a lead-equivalency of 0.5mm.

Code	Description
GL-OM	Oven Style Mitts



## Slit Mitts

A variation of the Oven Style Mitts with the upper section and thumb area open. One-size fits all with a lead-equivalency of 0.5mm.

Code	Description
GL-SM	Slit Mitts



## 15" Lead Vinyl Gloves

Each glove features an outer one-piece soft urethane molded design with an inner liner made from breathable nylon for comfort and is easily removed for inspection. Available individually or in pairs with a lead-equivalency of 0.5mm.

Code	Description
GL15	Seamless lead vinyl Glove - Pair
GL15L	Seamless lead vinyl Glove - Left
GL15R	Seamless lead vinyl Glove - Right



## UltraLite



- Stylish and comfortable wraparound frame.
- High-impact resistant plastic for safety.
- Colors: Black, Bronze, Carbon Fibre, Pink, Purple/Silver, Red, Silver and Yellow/Blue.
- Rx: Single and Bifocal.

## Maxi



- Unisex shape suits any face and gender.
- Padded temple bars and nose bridge for extra comfort.
- The most durable product in our line.
- Colors: Black, Blue, Red and Silver.
- Rx: Single, Bifocal and Progressive.

## Sport Wrap



- Solid, sturdy and extremely comfortable wraparound
- Built-in side-shields for safety.
- Colors: Black/Yellow and Brown/Orange.
- Rx: Single, Bifocal and Progressive.

## Contour



- The frame is constructed of high impact TR-90 nylon and features rubberized soft grip nose pads.
- Offers our standard high quality, distortion-free SF-6 Schott glass, radiation-reducing lenses.
- Colors: Black and Green.



## Fitover - Regular

- Designed to fit over existing prescription glasses.
- Black rubberized nylon frame.
- Lightweight and comfortable.
- Colors: Black and Tortoise.



## Fitover - Large

- Designed to fit over existing prescription glasses.
- Black rubberized nylon frame.
- Lightweight and comfortable.
- Colors: Black and Tortoise.



## Racer

- Stylish wrap-around frame constructed of high impact TR-90 nylon.
- Rubberized soft grip temple bars.
- 8 base wrap around lenses for full protection around the orbit of the eye



## The Lex

- Comfortable, lightweight and sturdy wide fit frame.
- Rubberized nose pads and temple bars provide a comfortable grip.
- Wraparound design ensures that your eyes are protected.





## Webby Designer

- Very chic head-hugging design for ladies
- Durable nylon plastic high-impact safety frame.
- Chemical resistant.
- Colors: Black/White and Blue/Black.
- Single, Bifocal and Progressive.



## Basic 52 Wrap

- Excellent peripheral vision with leaded glass side shields.
- Economical and lightweight with a spring hinge.
- Silicone, adjustable non-slip uni-fit bridge
- Rx: Single, Bifocal and Progressive.



## Stars

- Premium protective women's eyewear.
- "Jackie-O" sunglasses style with large lenses.
- Excellent splash and side protection.
- Colors: Black/White and Red/Black.
- Rx: Single, Bifocal and Progressive.



## Leopard

- Designer flair for style and performance.
- Head-hugging temple design with splash and side protection.
- Colors: Black and Tortoise.
- Rx: Single, Bifocal and Progressive.



## EGM Mini Wraparound

- Stylish wrap-around frame constructed of high impact TR-90 nylon.
- Rubberized soft grip temple bars.
- Rubberized saddle bridge nose pad for extra comfort
- Stylish two-tone rubberized temple bars.



## Splash Goggles - Regular

- Excellent peripheral vision with leaded glass side-shields.
- Economical and lightweight with a spring hinge.
- Comes with a silicone non-slip.
- Colors: As shown.
- Rx: Single, Bifocal and Progressive.



## Splash Goggles - Large

- Excellent peripheral vision with leaded glass side-shields.
- Economical and lightweight with a spring hinge.
- Comes with a silicone non-slip.
- Colors: As shown.
- Rx: Single, Bifocal and Progressive.

Please Note: All glasses are 0.75mm L.E. Side-Shields (If equipped) are 0.50mm L.E. with the exception of models with integral .75mm lateral shield. All glasses include a protective case and strap.

Some prescriptions and pupillary distance may not be suitable for your frame choice. Please verify your prescription in advance.

For Nike Leaded Eyewear please visit our [website](#)

## Scatter Protector

(Full or Half Mask)

- Transparent ultralight lead acrylic.
- Shield is suspended from an adjustable headpiece.
- Both feature a headband support with an adjustable dial for circumference and angular positioning for that perfect fit and maximum protection.
- Non-Rx only.

CAUTION: Lead Equivalency = 0.10mm

Do not sterilize or use abrasive cleaning materials.

Full Mask: 8" Wrap-around design (Weight: 395g)

Half Mask: 5" Wrap-around design (Weight: 350g)





## THE INDUSTRY EYEWEAR LEADER IN LASER PROCEDURE PROTECTION

The Laser Eyewear featured on this page is available with over 15 different filters. Many more frames are also available. Please consult with one of our Sales Representatives.

### FEATURES & BENEFITS

Multi-wavelength laser filter lenses with excellent light transmission qualities for Alexandrite Diode, Homium, YAG and CO<sub>2</sub> Lasers. Wide range of nanometre (nm) wavelength protection ranges available. Premium filter lenses that transmit maximum visible light for superior clarity during laser procedures. Prescription laser eyewear available.

### Available Frames



Fitover Frame



Lex Frame



Maxi Frame

	Fitover Frame (Black only)	Lex Frame (Black, Silver, Red)	Maxi Frame (Black, Silver, Red)
Homium/YAG/CO <sub>2</sub> Filter	✓	✓	✓
Prescription Laser Eyewear	Dependant on laser type.	Dependant on laser type.	Dependant on laser type.
Dual (Laser & Radiation) Protection	Dependant on laser type.	Dependant on laser type.	Dependant on laser type.
Alexandrite Diode/YAG Filter	✓	✓	✓
CO <sub>2</sub> /Excimer Filter	✓	✓	

## Homium/YAG/CO<sub>2</sub> Filter

- The lens is used as an infrared filter.
- Pale blue in color, it offers exceptional multi-wavelength protection in Homium, YAG, CO<sub>2</sub> laser environment.

Wavelength	Optical Density	Lens Colour	Visible Light Transmission
900-1000nm	5+	Pale Blue	Excellent
1000-1500nm	7+	Pale Blue	Excellent
1500-2400nm	7+	Pale Blue	Excellent
2900-10600nm	7+	Pale Blue	Excellent

## Prescription Laser Eyewear

- For the Homium/YAG/CO<sub>2</sub> filter.
- Single vision: +/- 3.00
- Bifocal: +/- 3.00

## Dual (Laser & Radiation) Protection

- Protection combination eyewear.
- A .75mm lead equivalency lens with a laser filter.

## Alexandrite Diode/YAG Filter

- It is a multi-wavelength filter with very high light transmission.
- Qualifies for both Alexandrite Diode and YAG lasers.

Wavelength	Optical Density	Lens Colour	Visible Light Transmission
700-1200nm	7+	Light Blue	64%

## CO<sub>2</sub>/Excimer Filter

- CO<sub>2</sub> and Excimer lasers are used frequently in ophthalmology and in dermatology.
- Anti-reflective coating comes standard.

Wavelength	Optical Density	Lens Colour	Visible Light Transmission
190-370nm	5+	Clear	82%
10600nm	6+	Clear	82%

## Patient Half-Apron with Buckle/VELCRO®/Hoop Closure

### Buckle/VELCRO® Closure

A patient half-apron with a 2" belt and optional Buckle (-B) or VELCRO® (-V) waist closure to provide adjustability where required. Available individually or as a set of 4, with or without a wall-mounted rack. When ordering, please choose the code with either a -B or a -V at the end (Example: Choose PED1-B to order a PED1 with a buckle waist closure).

### Hoop Closure

Patient half-apron with a flexible vinyl covered spring steel hoop. Available individually or as a set of 4, with or without a wall-mounted rack.

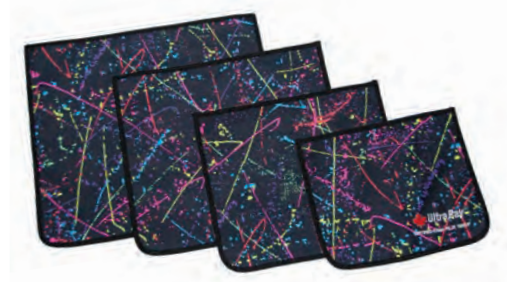
Standard Color: Royal Blue.  
Optional Colors: See Color Chart.  
Custom Sizes: Available upon request.

Code (Buckle/Velcro)	Code (Hoop)	Description
PED1-B or PED1-V	PED1-H	Pediatric Half-Apron 10"L x 12"W
HA1-B or HA1-V	HA1-H	Patient Half-Apron 12"L x 14"W
HA2-B or HA2-V	HA2-H	Patient Half-Apron 14"L x 16"W
HA3-B or HA3-V	HA3-H	Patient Half-Apron 16"L x 18"W
HA4-B or HA4-V	HA4-H	Patient Half-Apron 18"L x 20"W
HA5-B or HA5-V	HA5-H	Patient Half-Apron 18"L x 24"W
HA6-B or HA6-V	HA6-H	Patient Half-Apron 24"L x 24"W
HASET-B or HASET-V	HASET-H	Patient Half-Apron Set - 1 ea. of PED1, HA1, HA2 & HA3
HAR-BV	HAR-H	Wall-Mounted Rack only - Holds HASET
HASETR-B or HASETR-V	HASETR-H	Patient Half-Apron and Rack Set
HAB-CUST or HAV-CUST	HAH-CUST	Patient Half-Apron - Custom Size

## CT Patient Gonadal Wrap

CT Patient Gonadal Apron with a VELCRO® closure.

Code	Description	L.E.
PGW-1855	CT Patient Gonad Wrap 18"L x 55"W	0.5mm
PGW-2448	CT Patient Gonad Wrap 24"L x 48"W	0.5mm
PGW-3060	CT Patient Gonad Wrap 30"L x 60"W	0.5mm





## Adult Gonad Shields

One set of three Adult Gonad Shields (1 each of 3", 5" & 7" diameter). 0.5mm or 1.0mm lead equivalent protection.

2" Buckle Belt with a VELCRO® strip is also available. Comes with 1 set of 3 Adult Gonad Shields that can be

Code	Description	L.E.
AGS-5	3 Adult Gonad Shields (3", 5" & 7" diameter)	0.5mm
AGS-10	3 Adult Gonad Shields (3", 5" & 7" diameter)	1.0mm
AGSB-5	1 Adult Gonad Shield Belt with 1 AGS-5	0.5mm
AGSB-10	1 Adult Gonad Shield Belt with 1 AGS-10	1.0mm



## Triangular Gonad Shields

Code	Description	L.E.
TGS	Triangular Gonad Shield	0.5mm



## Scoliosis Shawl/Breast Protector

Scoliosis Shawl / Breast Protector panels provide breast and lung protection without compromising spinal image quality.

Alternative to the Scoliosis Shawl is Set of Adult Breast Shields. VELCRO® neck strap allows for various placement of the shields. Four sizes of shields in each

Code	Description	L.E.
SS-BS	Scoliosis Shawl / Breast Protector	0.5mm
ABS	Adult Breast Shields - Set of 4	0.5mm



## Pediatric Frontal Aprons

Based on Adult Frontal styles, these aprons are sized for pediatric use. Comes with integrated Thyroid Shield.



Size	Description
Small (1-3)	12" x 24"
Medium (4-6)	14" x 26"
Large (7-11)	16" x 28"

Code	Description
PBA1	Pediatric Frontal Apron with VELCRO® Closure
PBA1-SET	Set of PBA1 in Small, Medium & Large
PBA2	Pediatric Frontal Apron with Buckle Closure
PBA2-SET	Set of PBA2 in Small, Medium & Large
PBA3	Pediatric Frontal Apron with Tie-Strap Closure
PBA3-SET	Set of PBA3 in Small, Medium & Large

## Pediatric Thyroid Shields

Set of 3 sizes.

Small (6½" x 3"), Medium (7½" x 3½") & Large (8½" x 4")



Code	Description
PTS	Pediatric Thyroid Shields - Set of 3

## Pediatric Breast Shields

Smaller alternative to the Scoliosis Shawl that may be too large for children. Perfect for Pediatric Spinal exams. VELCRO® neck strap allows for various placement of shields.

Set of 3 sizes.

Two (4½" x 5½"), Two (6¾" x 8") & Two (7¾" x 10")

Available in 0.5mm True Lead.



Code	Description
PBS	Pediatric Breast Shields - Set of 6

## Pediatric Gonad Shields

Set of 4 sizes:

Small (3½" x 2¾"), Medium (4½" x 3½"), Large (5½" x 4½") & Extra Large (6½" x 5½").

## Pediatric Diapers

Set of six diapers sizes 1 - 6.

Size 1 = 8 - 14 lbs.

Size 2 = 12 - 18 lbs.

Size 3 = 16 - 28 lbs.

Size 4 = 22 - 37 lbs.

Size 5 = 27 - 34 lbs.

Size 6 = 35 - 41 lbs.

Available in 0.5mm True Lead.

Code	Description
PGS	Pediatric Gonad Shields - Set of 4
PDS	Pediatric Diapers

PGS



PDS



## Pediatric Mittens

Full wraparound protection while positioning pediatric patients. Features a VELCRO® wrist strap and a soft

Code	Description
PM	Pediatric Mittens - Pair



## Pediatric Sandbags

Blue nylon or vinyl sandbags with or without handles.

Code	Description
SBSET2-N or SBSET2-V	Pediatric Sandbag Set - 3 x 3lbs - No handles
SBSET2H-N or SBSET2H-V	Pediatric Sandbag Set - 3 x 3lbs - With handles





## Mobile Cassette Holder

Used to hold cassettes, grids or CR-Plates (8"x10" to 14"x17") during mobile procedures. The all-metal unit stands on a sturdy three-legged base with swivel locking casters. Can be used in Radiology, MRI or CT. Maximum Height: 46". Color: Beige

For additional cassette holders please visit this [link](#).



Code	Description
MCH	Mobile Cassette Holder with L/R Tilt
MCH-T	Mobile Cassette Holder with L/R Tilt & U/D Tilt

## Sandbags with/without handles

Sandbags are rectangular in shape and come in a wide range of stock sizes. An inner bladder is filled with sand and then inserted into a blue nylon or vinyl bag.

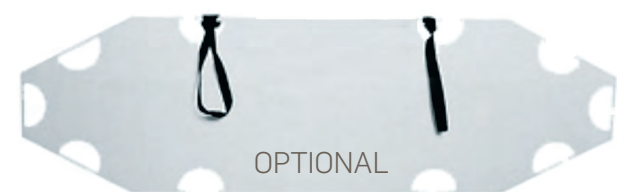


Code (NO HANDLES, Nylon or Vinyl)	Code (WITH HANDLES, Nylon or Vinyl)	Description
SB3-N or SB3-V	SB3H-N or SB3H-V	3 lbs. Sandbag - 7" x 7"
SB5-N or SB5-V	SB5H-N or SB5H-V	5 lbs. Sandbag - 7" x 12"
SB7-N or SB7-V	SB7H-N or SB7H-V	7 lbs. Sandbag - 6" x 17"
SB10-11-N or SB10-11-V	SB10H-11-N or SB10H-11-V	10 lbs. Sandbag - 11" x 11"
SB12-N or SB12-V	SB12H-N or SB12H-V	12 lbs. Sandbag - 7" x 24"
SB13-N or SB13-V	SB13H-N or SB13H-V	13 lbs. Sandbag - 12" x 12"
SB15-N or SB15-V	SB15H-N or SB15H-V	15 lbs. Sandbag - 11" x 15"
SB20-N or SB20-V	SB20H-N or SB20H-V	20 lbs. Sandbag - 8½" x 22"
CVB-N or CVB-V	CVBH-N or CVBH-V	Cervical Sandbag Set (2 of 10 lbs)
SBSET1-N or SBSET1-V	SBSET1H-N or SBSET1H-V	Set - 1 ea. of 5, 10, 15 & 20 lbs
SBSET2-N or SBSET2-V	SBSET2H-N or SBSET2H-V	Pediatric Set - 3 x 3 lbs
SBSET3-N or SBSET3-V	SBSET3H-N or SBSET3H-V	Set - 1 ea. of 3, 7, 12 & 13 lbs
SBSET4-N or SBSET4-V	SBSET4H-N or SBSET4H-V	Set - 1 ea. of 3, 5, 7, 10, 12, 13, 15 & 20 lbs
SB-CUST	SB-CUST	Custom sandbag

## Film Blockers

A lead-sheet that is sandwiched between two sheets of washable vinyl and available in many sizes.

0.5mm L.E.		1.0mm L.E.	
Code	Size	Code	Size
BL5-410	4" x 10"	BL10-410	4" x 10"
BL5-508	5" x 8"	BL10-508	5" x 8"
BL5-512	5" x 12"	BL10-512	5" x 12"
BL5-5514	5½" x 14"	BL10-5514	5½" x 14"
BL5-610	6" x 10"	BL10-610	6" x 10"
BL5-711	7" x 11"	BL10-711	7" x 11"
BL5-715	7" x 15"	BL10-715	7" x 15"
BL5-717	7" x 17"	BL10-717	7" x 17"
BL5-8514	8½" x 14"	BL10-8514	8½" x 14"
BL5-CUST	Custom	BL10-CUST	Custom



## Transfer Board

This radiolucent transfer board promotes safe and easy patient transfers. Although not anti-static, the slippery surface permits easy placement under the patient. With minimal help, you can move the patient from bed to gurney to X-ray table. Leave the unit under the patient during the exam. **Can be used in Radiology, MRI or CT.**

Surface imperfections inherent in finish do not affect function.

Code	Description
TB-SHT	Short Transfer Board 32" x 22" x 3/16"
TB-SLM	Slim Transfer Board 72" x 18" x 3/16"
TB-STD	Standard Transfer Board 72" x 22" x 3/16"
TB-XLG	X-Large Transfer Board 72" x 32" x 3/16"
TB-CUST	Custom Transfer Board
TB-WSR	Transfer Board Wall Storage Rack 8" x 3"



## Patient Caliper

The caliper is made of lightweight aluminum with an adjustment slide. No screws to lose.

Code	Description
863/CAL-21	Patient Caliper. Weight: 2 lbs.



## F-Spoon

Handheld lever-action radiolucent device used by a radiologist during supine abdominal fluoroscopy to displace bowel loops from one another and to better visualize tumors, ulcers and other abnormalities of the gastrointestinal tract.

Code	Description
FS	F-Spoon. Weight: 3 lbs



## Multi-Strap

Double-sided Hook & Loop strap. Strong as tape but soft to the skin. Reusable, radiolucent, and easily applied.

Additional strap options and customs straps available. Please contact your local rep or customer service."

Code	Description
MS3015	1 roll of Multi-Strap 30' x 1½"
MS3025	1 roll of Multi-Strap 30' x 2½"
MS3045	1 roll of Multi-Strap 30' x 4½"



## Arm Support

Slips under the mattress and around the patient's arm to prevent movement while in a prone or supine position. Excellent for use during specials, catheterization and nuclear medicine studies, the clear plastic provides a view of the patient at all times.

Code	Description
AS	1pr. Arm Support. Weight: 4 lbs.



## Pneumatic Compression Paddle

Used for guided compression during radiographic studies of the gastrointestinal tract. Made of Lucite. The imbedded metal ring provides quick fluoroscopic localization. Latex free.

Code	Description
PCP	Pneumatic Compression Paddle
PRB	Replacement Bladder
PRIB	Replacement Inflator Bulb
PCPR	Wall Rack for PCP



## Table Pads

Table Pads come with a Royal Blue vinyl or nylon covering in your choice of Regular, Dura-foam (Closed-Cell) or Memory superior quality mold and mildew resistant foam. Please refer to the chart below for standard sizes. Custom sizes available.



Shown: TP-CUST with TPHS (Custom Table Pad with optional hanging straps on sides).



Shown: TPHG (Handle Grips with 8" Flaps).

1" Foam Table Pads			
Code (Nylon Cover)	Code (Vinyl Cover)	Size	Foam Type
TPNR1-7827	TPVR1-7827	78" x 27" x 1"	Regular
TPND1-7827	TPVD1-7827	78" x 27" x 1"	Dura-foam
TPNM1-7827	TPVM1-7827	78" x 27" x 1"	Memory
TPNR1-7224	TPVR1-7224	72" x 24" x 1"	Regular
TPND1-7224	TPVD1-7224	72" x 24" x 1"	Dura-foam
TPNM1-7224	TPVM1-7224	72" x 24" x 1"	Memory
TPNR1-7219	TPVR1-7219	72" x 19" x 1"	Regular
TPND1-7219	TPVD1-7219	72" x 19" x 1"	Dura-foam
TPNM1-7219	TPVM1-7219	72" x 19" x 1"	Memory
TPNR1-6024	TPVR1-6024	60" x 24" x 1"	Regular
TPND1-6024	TPVD1-6024	60" x 24" x 1"	Dura-foam
TPNM1-6024	TPVM1-6024	60" x 24" x 1"	Memory
TPNR1-4221	TPVR1-4221	42" x 21" x 1"	Regular
TPND1-4221	TPVD1-4221	42" x 21" x 1"	Dura-foam
TPNM1-4221	TPVM1-4221	42" x 21" x 1"	Memory

2" Foam Table Pads			
Code (Nylon Cover)	Code (Vinyl Cover)	Size	Foam Type
TPNR2-7827	TPVR2-7827	78" x 27" x 2"	Regular
TPND2-7827	TPVD2-7827	78" x 27" x 2"	Dura-foam
TPNM2-7827	TPVM2-7827	78" x 27" x 2"	Memory
TPNR2-7224	TPVR2-7224	72" x 24" x 2"	Regular
TPND2-7224	TPVD2-7224	72" x 24" x 2"	Dura-foam
TPNM2-7224	TPVM2-7224	72" x 24" x 2"	Memory

Table Pads Options	
Code	Description
TPHS	Table Pad - Hanging Straps (side or top)
TPHG	Table Pad - Handle Grips with 8" Flaps
TP-CUST	Custom Table Pad

**\*COMBINATION FOAM PADS NOW AVAILABLE**

## Radiation Warning Signs

Brightly coloured plastic warning signs. Double-faced mounting tape for easy and convenient installation. Available in English (E), French (F) and Bilingual (B). Custom signs available. 7" W x 9.5" H.

Code	Description
RWS-E RWS-F RWS-B	Radiation Warning Signs
RWS-CUST	Custom Sign

White Plastic warning sign with red lettering. Double-faced mounting tape for easy and convenient installation. Available in English (RE) and Bilingual (RB). Custom signs available. 6" W x 8" H.

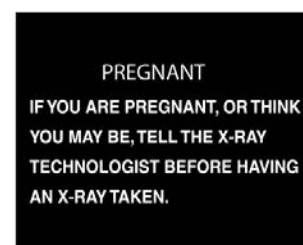
Code	Description
RWS-RE RWS-RB	Radiation Warning Signs



## Pregnancy Warning Signs

Black plastic sign with white lettering. Double-faced mounting tape for easy and convenient installation. Available in English (E), 8" W x 10" H and Bilingual (B), 10" W x 16" H.

Code	Description
PWS-E PWS-B	Pregnancy Warning Signs



**\*CT, MRI and custom signs also available.**





## Wall-Mounted Tubular Rack

Chrome Lead Apron and Glove Holder, Holds one apron and one pair of gloves. No assembly required. Installation hardware is not included.

Code	Details	Dimensions	Weight
ART	Wall-Mounted Tubular Rack	27.75"W x 17"H x 5 <sup>1</sup> / <sub>4</sub> "D	8.5 lbs



## Wall-Mounted Compact Rack

Ideal wall mount rack for storing multiple pairs of gloves and aprons. Also has convenient bar to hold thyroid collars. Sturdy steel construction. No assembly required. Installation hardware is not included.

Code	Details	Dimensions	Weight
ARC	Wall-Mounted Compact Rack	19" W x 20" H x 8"D	10lbs



## Wall Mount Full Swing Rack

Excellent storage capacity. This heavy duty metal rack holds up to five aprons on 5 pivoting apron hangers. Each hanger can swing a full 180 degrees to either left or right. Maximum suggested weight capacity of 110 pounds. Some assembly required. Installation hardware is not included.

Arms perpendicular to the wall: 22"

Code	Details	Dimensions (Plate)	Weight
AR6FS	Wall-Mounted Left and Right Folding Apron Rack	17" W x 4 <sup>5</sup> / <sub>8</sub> " H	15lbs

## Wall Mounted Towel Bar Rack 1 & 2

When mounted securely to a wall, can hold one apron (but will accomodate more). 1.75" diameter bar will prevent apron creasing and possible lead damage. Glove holders are mounted onto back panel and located side by side. Available with glove holder for 1 pair or 2 pairs of gloves. All steel heavy duty construction. No assembly required. Installation Hardware is not included.

Code	Details	Dimensions	Weight
ARTB1	Wall Mounted Towel Bar Rack	28" W x 7" H x 6 <sup>1</sup> / <sub>2</sub> " D With glove holder 25" H	13lbs
ARTB2	Wall Mounted Towel Bar Rack	28" W x 7" H x 6 <sup>1</sup> / <sub>2</sub> " D With glove holder 25" H	14lbs



## Wall-Mounted Peg Rack

Peg racks are a quick, easy, durable storage solution. They are constructed of steel with an electro-magnetic powder coating. When mounted securely to a wall, peg racks can hold anywhere from 1-9 aprons depending on size. All pegs measure 4.5" L and are slanted to prevent apron from slipping off peg. No assembly required. Installation Hardware is not included.

Code	Details	Dimensions	Weight
ARP1	1 Apron / 2 peg	6"W x 3"H x 4.5"D	4.2lbs
ARP2	2 Aprons / 4 peg	12W" x 3"H x 4.5"D	6lbs
ARP4	4 Aprons / 8 peg	19W" x 3"H x 4.5"D	12lbs
ARP7	7 Aprons / 14 peg	36"W x 3"H x 4.5"D	13.6lbs
ARP9	9 Aprons / 18 peg	50"W x 3"H x 4.5"D	18lbs





## Five Arm Lead Apron Wall Rack

Holds up to five aprons on five arms. It features five chromium-plated pivoting hangers which can flatten out nearly 180 degrees for space saving and storage behind doors, equipment, and more. Arms can swing either left or right. Weight capacity 600lbs. No assembly required. Installation hardware is not included.

Code	Details	Dimensions	Weight
AR6L	Wall-Mounted Left to Right Apron Rack	Arms flush against the wall 28"W x 9" H x 4 <sup>1/8</sup> " D	15lbs
AR6R	Wall-Mounted Right to Left Apron Rack	Arms flush against the wall 28"W x 9" H x 4 <sup>1/8</sup> " D	15lbs



## Mobile Maxi-Rack with AR6L and AR6R

The mobile Maxi-Rack is the solution when wall mounting AR6 Racks are not possible or mobility is required. Supports 1 left folding and 1 right folding rack. Holds 10 aprons on pivoting arms. Weight capacity 600lbs. Equipped with 4 swivel castors (2 with brakes). Some assembly required.

Code	Details	Dimensions	Weight
ARMX	Maxi-Rack complete with 1 AR6L and 1 AR6R	54"W x 54"H x 20"D	125lbs



## Vest & Skirt Mobile Rack

Heavy-duty metal apron rack with locking casters. Holds 10 vest and skirt aprons.

Code	Details	Dimensions	Weight
ARVS	Vest & Skirt Mobile Rack	39"W x 55"H x 26"D	120lbs





## Mobile Pedestal Apron Rack

Pedestal design is counter weighted for the utmost stability. Holds up to 10 aprons on pivoting arms that fold flat. Will safely hold the heaviest lead.

Code	Details	Dimensions	Weight
ARMX-HB	Mobile Pedestal Apron Rack	20"W x 49 <sup>1</sup> / <sub>2</sub> "H x 24"D	60lbs

## Mobile Apron Rack

Heavy-duty metal apron rack with 4 swivel casters (2 casters are equipped with brakes for locking). Hangers not included.

Small: holds 5-8 aprons or a total weight of 150 lbs.

Large: holds 10-13 aprons or a total weight of 300 lbs.

Code	Details	Dimensions	Weight
AR5	Small Mobile Apron Rack	23 <sup>1</sup> / <sub>2</sub> " L" 54"H x 22 <sup>1</sup> / <sub>2</sub> "W	28lbs / 32lbs w hangers
AR10	Large Mobile Apron Rack	35 <sup>1</sup> / <sub>2</sub> " L" 54"H x 22 <sup>1</sup> / <sub>2</sub> "W	33lbs / 41lbs w hangers

### KITS

Code	Details
AR5KIT-O	Holds 5 to 8 Aprons includes 5 hangers - OPEN HANGERS
AR5KIT-C	Holds 5 to 8 Aprons includes 5 hangers - CLOSED HANGERS
AR10KIT-O	Holds 10 to 13 Aprons includes 10 hangers - OPEN HANGERS
AR10KIT-C	Holds 10 to 13 Aprons includes 10 hangers - CLOSED HANGERS



## Apron Hanger

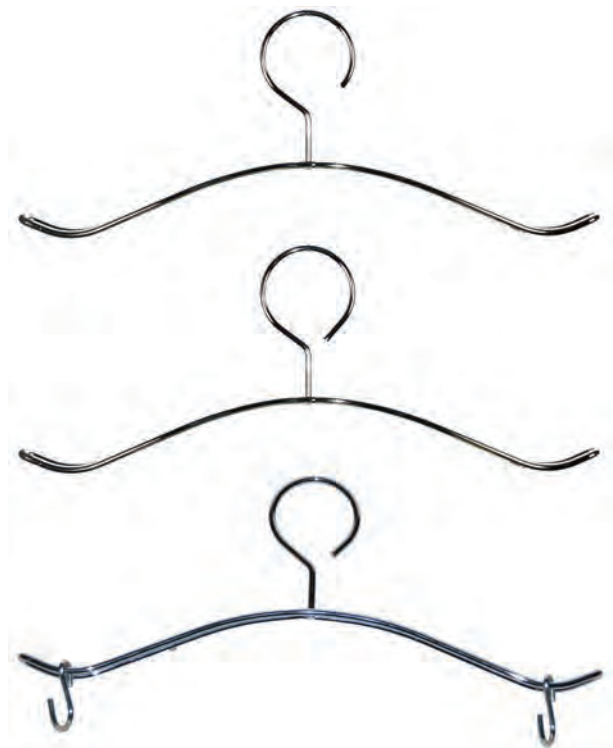
A chrome plated steel hanger designed to hang the heaviest apron on an apron rack or to hang it on a hook behind a door or wall hook. Raised end design prevents apron from slipping off the hanger.

Code	Details	Dimensions	Weight
ARHO	Apron Hanger (Open Loop)	19" W x 8"H	1lb
ARHC	Apron Hanger (Closed Loop)	19" W x 8"H	1lb

## Vest & Skirt Apron Hanger

A chrome plated steel hanger with skirt hooks.

Code	Details	Dimensions	Weight
ARHO-SH	Vest & Skirt Hanger (Open Loop)	19" W x 8"H	1.6lb
ARHC-SH	Vest & Skirt Hanger (Closed Loop)	19" W x 8"H	1.6lb



## Mobile Spider Apron Rack

An apron storage rack with eight spiral arms atop a post that is mounted on a star-shaped five leg base with nylon casters that is suitable for an Operating Room or a Cath Lab. Arms are slanted for better hold of aprons. This apron rack is available with optional glove holders, holding 3 pairs of gloves. Weight capacity 200lbs.

Code	Details	Dimensions	Weight
AR8	Mobile Spider Apron Rack	51" H x 24" W	30lbs
AR8-GH	Mobile Spider Apron Rack with Glove Holders	61 <sup>1/2</sup> " H x 24" W	36lbs

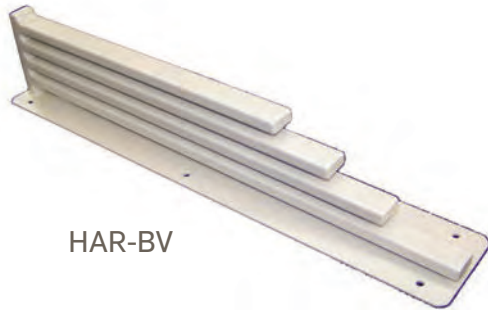
Mobile Spider Apron Rack



Top View of Rack with Glove Holders

## Wall-Mounted Rack for Half Aprons

Each rack accommodates 4 half-aprons. Half-aprons are not included. HAR-BV holds VELCRO® or Buckle half-aprons, and HAR-H holds Hoop half-aprons.



HAR-BV

HAR-H



Code	Details	Dimensions	Weight
HAR-BV	Wall-Mounted Rack only (Holds 4 VELCRO® or Buckle Half-Aprons)	21" L x 3½" H x 4" D	5.8/bs
HAR-H	Wall-Mounted Rack only (Holds 4 Hoop Half-Aprons)	17½" L x 4" H x 9¼" D	10.8lbs

## Table Scatter Shield

Shield lower extremities from scatter radiation with table scatter shields. Anchor pad or hook and loop attachments. Single sided or double sided. Sewn edges or heat-sealed edges. Standard or custom sizes.



Code	Description
TDS-4824	Single Table Shield 48" x 24" - 0.5mm L.E.
TDS-4828	Single Table Shield 48" x 28" - 0.5mm L.E.
TDS-4836	Single Table Shield 48" x 36" - 0.5mm L.E.
TDS-3624	Single Table Shield 36" x 24" - 0.5mm L.E.
TDS-3628	Single Table Shield 36" x 28" - 0.5mm L.E.
TDS-3636	Single Table Shield 36" x 36" - 0.5mm L.E.
TDD-4824	Double Table Shield 48" x 24" - 0.5mm L.E.
TDD-4828	Double Table Shield 48" x 28" - 0.5mm L.E.
TDD-4836	Double Table Shield 48" x 36" - 0.5mm L.E.
TDD-3624	Double Table Shield 36" x 24" - 0.5mm L.E.
TDD-3628	Double Table Shield 36" x 28" - 0.5mm L.E.
TDD-3636	Double Table Shield 36" x 36" - 0.5mm L.E.
TD-CUST	Custom Table Shield
ATS-3228	Table Shield 32" x 28" Adjustable Height/Swing



Mobile Shield on T-Base

Adjustable height mobile shield that adjusts from 8" to 60". Excellent for patient and staff protection during imaging procedures. All steel T-Base provides excellent stability and confidence in no-tipping. Easy movement around the room and the unique base allows easy positioning around equipment and wall stands. Posi-Lock height adjustable arm with spring-loaded pin. Includes a durable nylon covered shield.

At lowest adjustment, will slide under a bench or table



Code	Description	Weight (approx)
MST	Frame Only	
MST-3024	Mobile Shield with Curtain 30" L x 24" W - 0.5mm L.E. <b>with velcro attachment</b>	27lbs
MST-3024-1	Mobile Shield with Curtain 30" L x 24" W- 1.0 mm L.E. <b>with bolt attachment</b>	37lbs

Mobile Shield on H-Base

Adjustable height: up to 60". Post Height: 60". Base Overall Dimensions: 24" W x 24" D. All steel H-base for maximum stability. Hardened chrome steel post. Posi-Lock height adjustable arm with spring-loaded pin. Includes a durable nylon covered shield with **Bolt attachment only**.

Code	Description	Weight (approx)
MSH	Frame Only	
MSH-3636	Mobile Shield with Curtain 36" x 36" - 0.5mm L.E. <b>with bolt attachment</b>	44lbs
MSH-4848	Mobile Shield with Curtain 48" x 48" - 0.5mm L.E. <b>with bolt attachment</b>	52lbs



## Porta Shield

Adjustable mobile shield with soft curtain. Adjustable height from 24" to 48". Preset holes in the frame allow for swift and easy adjustment. Frame sits on four heavy duty casters for easy movement. Base measurement is 24" x 22".

Code	Description	Weight (approx)
PS5	Porta Shield with Curtain 24" x 36" - 0.5mm L.E.	40lbs
PS7	Porta Shield with Curtain 24" x 36" - 0.75mm L.E.	42lbs
PS10	Porta Shield with Curtain 24" x 36" - 1.0mm L.E.	45lbs
PS-CUST	Porta Shield - Custom	



## Mobile Curtain Barrier

Excellent for patient protection during standing diagnostic procedures such as erect chest and cervical spine. Includes a durable nylon covered .5mm L.E. shield. Five castor star leg base. The base offers a sturdy 24-inch diameter, to ensure smooth and stable transportation around the room. It comes in three parts for quick and easy assembly. The adjustable telescoping hole allows the shield height to be set by the user. The top of the shield can be as low as 36 inches, or as high as 60 inches.

Code	Description	Weight (approx)
MS-2424	Mobile Shield with Curtain 24" x 24" - 0.5mm L.E. - <b>with velcro attachment</b>	23lbs
MS-2436	Mobile Shield with Curtain 24" x 36" - 0.5mm L.E. - <b>with velcro attachment</b>	25lbs
MS-2448	Mobile Shield with Curtain 24" x 48" - 0.5mm L.E. - <b>with velcro attachment</b>	28lbs
MS-CUST	Mobile Shield - Custom - 0.5mm L.E.	
MS2428SP	Mobile Shield with Split Panel Curtain 24" x 28" - 0.5mm L.E. - <b>with bolt attachment</b>	32lbs



## Curtains

Curtains are ideal for areas where secondary or low-level radiation is present (Rooms and Doorways). Supplied with or without hard-ware. See pages 25-28 for fabric options.



Code	Description
DC5-27	Doorway Curtain 24"x 84" - 0.5mm L.E.
DC5-47	Doorway Curtain 48"x 84" - 0.5mm L.E.
DC10-27	Doorway Curtain 24"x 84" - 1.0mm L.E.
DC10-47	Doorway Curtain 48"x 84" - 1.0mm L.E.
DC-CUST	Doorway Curtain - Custom
RDC2	Room Divider Curtain / per sq. ft. - 0.25mm L.E.
RDC5	Room Divider Curtain / per sq. ft. - 0.5mm L.E.
RDC7	Room Divider Curtain / per sq. ft. - 0.75mm L.E.
RDC10	Room Divider Curtain / per sq. ft. - 1.0mm L.E.
TRA-4	Doorway / Room Divider 4' 0" Track
TRA-8	Doorway / Room Divider 8' 0" Track
TRO	Doorway / Room Divider Trolley (eacy)

## Lead Vinyl Sheets

LeadX® is a smooth and flexible non-absorbent vinyl material that is easily cleaned.

Width options: 24" and 48".



0.25mm L.E.		0.5mm L.E.		1.0mm L.E.	
Code	Size	Code	Size	Code	Size
LX2-2424	24" x 24"	LX5-2424	24" x 24"	LX10-2424	24" x 24"
LX2-2436	24" x 36"	LX5-2436	24" x 36"	LX10-2436	24" x 36"
LX2-2448	24" x 48"	LX5-2448	24" x 48"	LX10-2448	24" x 48"
LX2-3648	36" x 48"	LX5-3648	36" x 48"	LX10-3648	36" x 48"
LX2-4848	48" x 48"	LX5-4848	48" x 48"	LX10-4848	48" x 48"
LX2-CUST	Custom	LX5-CUST	Custom	LX10-CUST	Custom
LX-PKG		Packaging Charge per Piece			