



## EzSensor<sup>Vet</sup>

*Intraoral CMOS Sensors*

- Superior Image Obtained With CMOS Technology
- Slim Design For Easy Positioning
- IP68 Water And Dust Protection
- Fiber Optic Cable Connector
- Ergonomic Rounded Corner Design For Comfort
- Trusted Equipment Durability



*Veterinary  
Digital Imaging Solutions*

# The EzSensor Vet provides trustworthy images for accurate diagnosis and treatment planning.

## SPECIFICATIONS

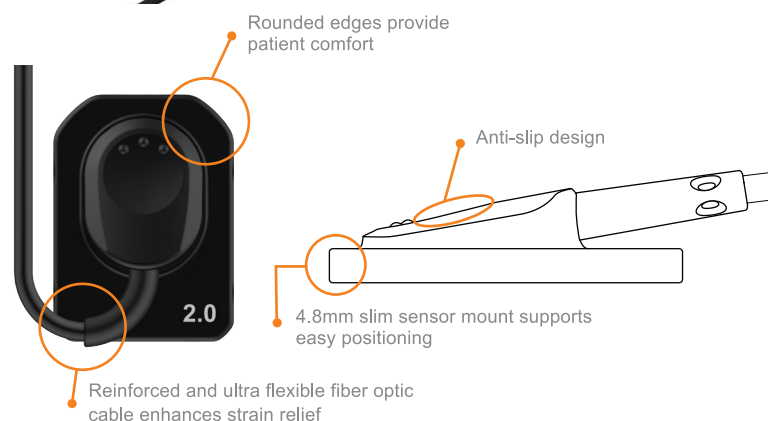
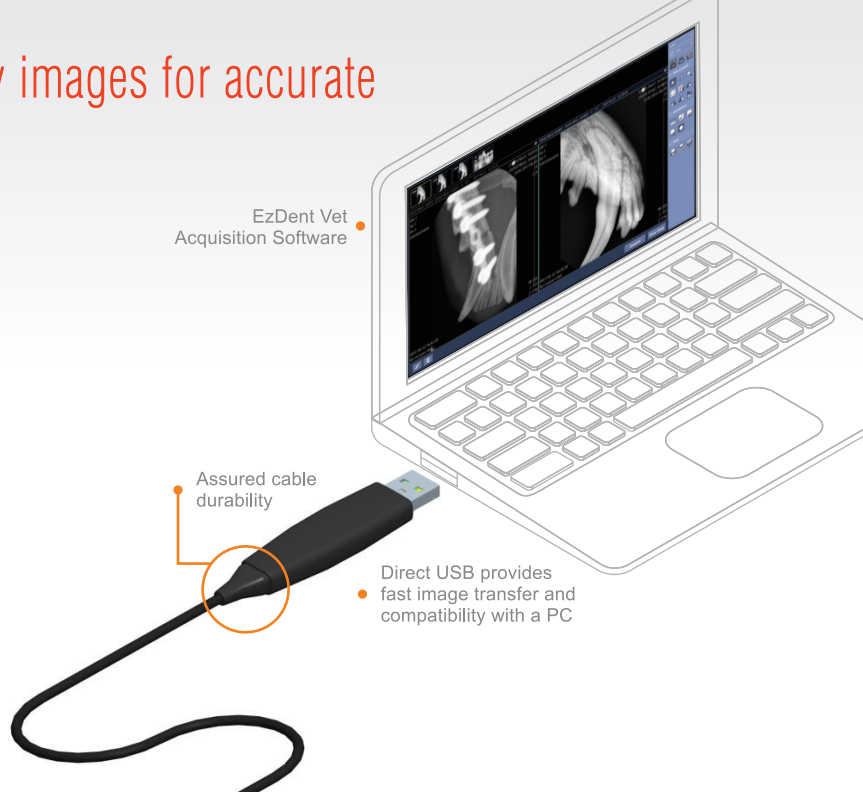
		EzSensor Vet
Model Number	Unit	HDI-S
Sensor Type	-	CMOS
Scintillator	-	FOS (FOP + CsI)
Pixel Size	µm	29.6
Pixel Array	Pixels	Binning Mode:1216x878
A/D	Bits	12
Waterproof		IP68
Energy Range	KvP	55 ~ 70
Data Output (Interface)	-	Direct USB (USB 2.0)
Input Voltage	V	DC 5V, 1 AMP
Dynamic Range	dB	≥ 67
Theoretical Resolution	lp/mm	16.8
Cable Length	ft	8.6

\* Specifications subject to change without prior notice \*

## SLIM DESIGN, EASY POSITIONING

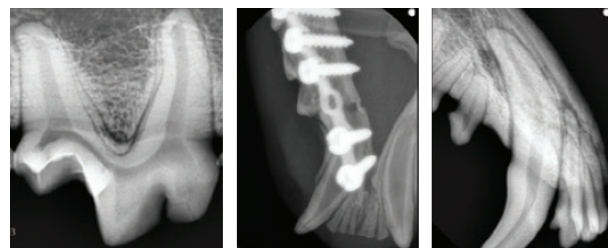
Rounded corner design with 4.8mm slim design allow maximum comfortable placement against soft tissue by reducing pressure on oral mucosa.

- The advantage of the digital sensor is to provide fast and efficient workflow.
- Direct USB connector enables fast image transfer.
- EzSensor Vet rated at IP68, the highest level of Ingress Protection (IP) : Complete protection against dust and water



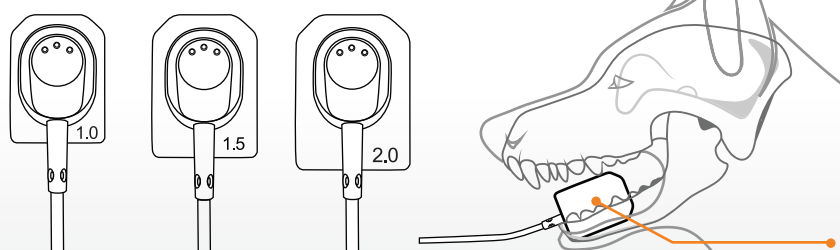
## OBTAIN HIGH QUALITY DIAGNOSTIC IMAGES

Using hybrid CMOS technology, EzSensor Vet series provide sharp, high quality images. The high-resolution technology combined with noise and artifact suppression provides clear and consistent precise diagnosis.



## DIMENSIONS and OPTIONS

Ergonomically designed sensors has three sizes that meet the needs of various sizes of animal mouths.



	Size 1.0	Size 1.5	Size 2.0
Active Area	20 x 30 mm 0.79 x 1.81 in	24 x 33 mm 0.94 x 1.30 in	26 x 36 mm 1.02 x 1.42 in
Dimension	25.4 x 36.8 mm 1 x 1.45 in	29.2 x 39.5 mm 1.14 x 1.55 in	31.3 x 42.9 mm 1.23 x 1.69 in
Thickness	4.8 mm (0.19 in)	4.8 mm (0.19 in)	4.8 mm (0.19 in)

EzSensor Vet series features multiple sizes to accommodate various mouth sizes



1789 Notre Dame Drive, Unit 103  
St. Agatha, ON N0B 2L0  
PH: 519-885-3254  
[www.calicomedical.com](http://www.calicomedical.com)

