



# **Radiology Accessories for the Vet Market**

# Plan to Keep us Still?



Veterinary Immobilizers from **Techno-Aide** saves time with positioning.  
Available in a variety of sizes to meet all your imaging needs.  
Available in Black or Royal Blue

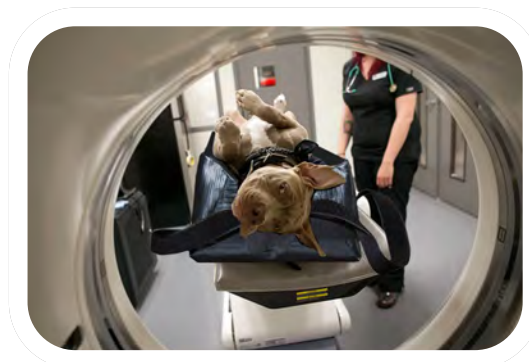
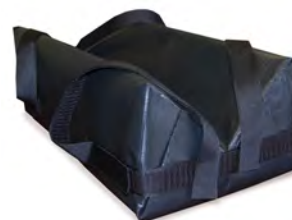


## Covered stabilizer sponges:

This immobilizer is covered with Techno-Tuff nylon reinforced vinyl that is virtually claw proof! Features four hook and loop straps with which to secure limbs while in position. Versatile for several applications.

Cat #	Size	L x W X H
QYVCA	SMALL	10" X 4" X 3"
QYVCB	MEDIUM	15" X 7" X 5"
QYVCC	LARGE	24" X 11" X 7"
QYVCD	X LARGE	36" X 14" X 9"
QYVCE	XXLARGE	47.5 X 18 X 12

Available in Royal  
Blue and Black





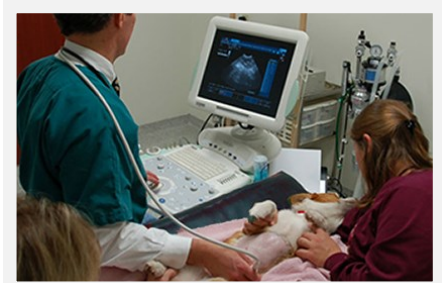
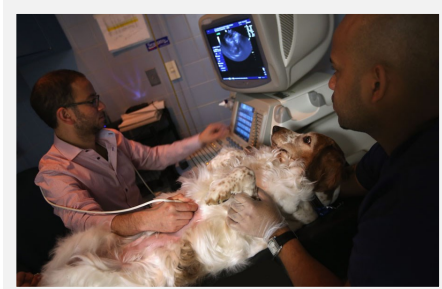
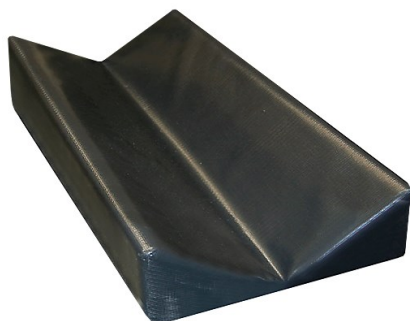
**NEW**

# Veterinary Ultrasound Immobilizer



Our NEW Vinyl Covered Positioning device provides excellent stability during ultrasound positioning. This reusable positioner is manufactured from a firm high density urethane foam and is covered in heavy gauge reinforced vinyl that is easy to clean. Seams are sewn & tear resistant. Radiolucent, however seams on the edge may show.

Cat #	POSITIONER	L x W X H
YVFCE	Veterinary Ultrasound Immobilizer	48" x 18" 1" at lowest point and 5" at highest point



**CMI**  
*Calico Medical*  
INCORPORATED


1789 Notre Dame Drive, Unit 103  
St. Agatha, ON N0B 2L0  
PH: 519-885-3254  
[www.calicomedical.com](http://www.calicomedical.com)







# VETERINARY IMMOBILIZERS

 Vinyl covered Positioning devices provide excellent stability during positioning for an examination. Reusable blocks, bolsters and wedges are manufactured from firm high density urethane foam. Royal blue outer covering is durable heavy gauge reinforced vinyl. (**Not claw or teeth proof**) Seams are sewn and tear resistant. Easy to clean and radiolucent, however seams on edge may show. Provides your animals excellent support for a wide variety of imaging needs.

Cat #	POSITIONER	L x W x H
YVF45	Cylinder	26" x 6"
YVFA	Cylinder	24" x 8"
YVFB	Semi Round	8" x 18" x 6"
YVFJ	Block	8" x 12" x 3"
YVFG	Block	8" x 12" x 6"
YVFH	Block	12" x 14" x 3"
YVFP	Block	18" x 24" x 4"
YVFK	Block	20" x 13" x 3"
YVFI	Block	24" x 15" x 3"
YVF42	Block	12" x 12" x 9"
YVF78	Block	25" x 17" x 2"
YVFQ	Block	20" x 20" x 12"
YVFU	30/60/90 degree Wedge	10" x 24" x 6"
YVFO	45 degree Wedge	7" x 21" x 7"
YVFD	45 degree Wedge	8" x 16" x 8"
YVFC	20 degree Wedge	24" x 18" x 6"
YVDB	30 degree Wedge	28" x 27" x 16"
YVDA	45 degree Wedge	28" x 14" x 14"
YVFE	20 degree Wedge	12" x 32" x 12"
YVFF	50 degree Wedge	20" x 32" x 12"



**CUSTOM SIZES  
AVAILABLE**



## Vinyl-Covered Bolster Blocks & Kits

Reusable blocks, bolsters, and wedges are manufactured from firm, high-density urethane foam. Royal Blue outer covering is durable, heavy gauge, reinforced vinyl. Seams are sewn and tear resistant. Easy to clean Bolsters are RADIOLUCENT, however, the seams may show. Provides excellent support for a wide variety of imaging needs.

#YVF45  
Cylinder  
26" x 6" dia.



#YVFA  
Cylinder  
24" x 8" dia.



#YVFB  
Semi-Round  
8" x 18" x 6"



#YVFJ  
Block  
8" x 12" x 3"



#YVFG  
Block  
8" x 12" x 6"



#YVFH  
Block  
12" x 14" x 3"



#YVFP  
Block  
18" x 24" x 4"



#YVFK  
Block  
20" x 13" x 3"



#YVFI  
Block  
24" x 15" x 3"



#YVF42  
Block  
12" x 12" x 9"



#YVF43  
Block  
12" x 12" x 12"



#YVFQ  
DEXA Block  
20" x 20" x 12"



## Bolster Kits



#YSU1  
KIT Includes:  
YVFB, (2) YVFG, YVFJ



#YSU2  
KIT Includes:  
YVFG, (2) YVFJ



#YSU3  
KIT Includes:  
YVFB, YVFD, YVFG

## Vinyl-Covered Bolsters Wedges & Kits



#YVFU  
30°/ 60°/ 90° Wedge  
10" x 24" x 6"



#YVFO  
45° Wedge  
7" x 21" x 7"



#YVFD  
45° Wedge  
8" x 16" x 8"



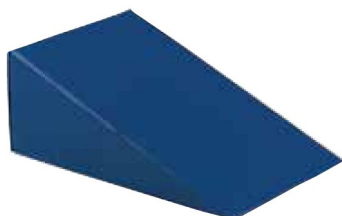
#YVFC  
20° Wedge  
24" x 18" x 6"



#YVDB  
30° CardiacWedge  
28" x 27" x 16"



#YVDA  
45° CardiacWedge  
28" x 14" x 14"



#YVFE  
20° Wedge  
20" x 32" x 12"



#YVFF  
50° Wedge  
20" x 32" x 12"



## Bolster Kits



#YSU4  
KIT Includes:  
YVFA, YVFB, YVFC, YVFD,  
YVFG, YVFH, YVFJ, YVFK



#YSU5  
KIT Includes:  
YVFB, YVFC, YVFD,  
YVFJ, YVFO



#YSU6  
KIT Includes:  
YVFJ, YVFK,  
YVFO, YVJV





# VETERINARY IMMOBILIZERS

Positioning devices are one of the most important accessory items used in veterinary radiography. Their use is important for the obvious difficulties of maintaining position of the animal throughout an examination.



## Immobilizer sponges:

Non-coated sponges are manufactured from a soft open cell polyurethane foam that provides excellent support and comfort. **NOT Claw or teeth proof**

Coated sponges are the same standard light green sponge above, but coated with a medical grade durable and easy to clean surface that is resistant to blood, Betadine, barium, alcohol, oils, urine, and feces. Ideal for easy cleaning.

**NOT Claw or teeth proof**

## Coated

Cat #	Size	L x W X H
QYCCA	SMALL	10" X 4" X 3"
QYFCB	MEDIUM	15" X 7" X 5"
QYCCC	LARGE	24" X 11" X 7"
QYCCD	X LARGE	36" X 14" X 9"

## Non-Coated

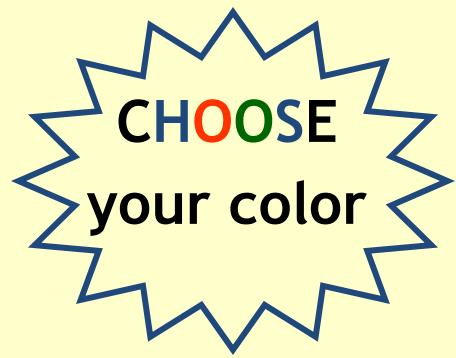
Cat #	Size	L x W X H
QYFCA	SMALL	10" X 4" X 3"
QYFCB	MEDIUM	15" X 7" X 5"
QYFCC	LARGE	24" X 11" X 7"
QYFCD	X LARGE	36" X 14" X 9"

**AVAILABLE IN 4 SIZES!**



# Sandbags

- All sandbags are filled with sand and are ready to use.
- Heat sealed inner sleeve prevents the leaking of sand.
- All seams are sewn and tear resistant.
- Outer cover is heavy gauge, reinforced vinyl.
- Every sandbag includes a reinforced webbing handle.



1-lb 4" x 5"

Cat.#SBP-01



2-lb 4" x 9"

Cat.#SBP-02



3-lb 5" x 9"

Cat.#SBP-03



5-lb 5" x 12"

Cat.#SBF-05



5-lb 7" x 9"

Cat.#SBP-05



5-lb 9" x 9"

Cat.#SBC-05



7-lb 10" x 10"

Cat.#SBG-07



7-lb 6" x 14"

Cat.#SBF-07



10-lb 7" x 16"

Cat.#SBF-10



10-lb 11" x 11"

Cat.#SBC-10



15-lb 12" x 12"

Cat.#SBG-15



20-lb 12" x 14"

Cat.#SBC-20



20-lb  
8" x 21"  
Cat.#SBF-20

## COLORS:

GREEN—*Default*

RED

BLUE

BLACK

MINT GREEN

YELLOW

Adequate weight to secure limbs during positioning. Helps stabilize skull and neck dorsally. Provides immobilization to avoid manual restraint. Also available in kits!



general set (a)  
Cat.#SBK-GAgreen  
Set: (2) 3-lb/5" x 9", (1) 5-lb/5" x 12", (1) 5-lb/7" x 9", (2) 7-lb/6" x 14", (2) 10-lb/11" x 11"



general set (b)  
Cat.#SBK-GBblue  
Set: (2) 3-lb/5" x 9", 2) 7-lb/6" x 14", (2)10-lb/11" x 11"



general set (c)  
Cat.#SBK-GCred  
Set: (1) 1-lb/4" x 5", (1) 7-lb/10" x 10", (1) 3-lb/5" x 9", (1)7-lb/6" x 14", (1) 5-lb/5" x 12", (1)10-lb /7" x 16", (1) 5-lb/7" x 9", (1) 15-lb / 12" x 12"





## Sandsocks

Are loosely filled sandbags that contour to a broad range of shapes and forms. Stabilizes hard to hold and irregular anatomy. Double seams for strength and longevity. Flexible, heavy gauge, reinforced vinyl.



sandsock set

Cat.#SBK-SA

- (1) 1-lb/2" x 8"
- (1) 10-lb/6" x 20"
- (1) 3-lb/4" x 12"
- (1) 12-lb/6" x 25"
- (1) 5-lb/5" x 15"

Weight	Size	Cat#
1 lb	2" x 8"	#SBS-01
3 lb	4" x 12"	#SBS-03
5 lb	5" x 15"	#SBS-05
10 lb	6" x 20"	#SBS-10
12 lb	6" x 25"	#SBS-12
10 lb	6" x 28"	#SBS-28
15 lb	6" x 34"	#SBS-34
15 lb	6" x 40"	#SBS-40
15 lb	6" x 46"	#SBS-46



**Custom Weights & Sizes  
Are Available Upon Request**



Cat# EV\_

Shown with Optional **FREE**  
Back Strap add Cat# EMS



Cat# EB\_

## EZ GUARD APRONS

Our Most Popular Front Protection apron with an easy criss-cross back. Double-fold binding for strength and tear resistance. 0.5mm Pb equivalency protection. Free dual pocket to store an attached thyroid collar and a separate pocket for other items. Concealed shoulder pads for extra comfort. Two year warranty on the materials and workmanship. 40+ Color options.

Manufactured in an  
**FDA**  
Registered Facility



Available in two styles:

Hook n Loop	Cat#	Lead type	petite small medium	large x-large	2X 3X	4X 5X
	EVR	Regular				
	EVL	Light Wt.				
	EVG	Lead Free				
Buckle	Cat#	Lead type	petite small medium	large x-large	2X 3X	4X 5X
	EBR	Regular				
	EBL	Light Wt.				
	EBG	Lead Free				

SIZE	WIDTH	LENGTH	FITS CHEST
Petite	18	30	<36"
Small	20	32	<40"
Medium	22	36	<44"
Large	24	38	<48"
X-Large	26	40	<52"
2X	28	40	<56"
3X	30	40	<60"
4X	32	42	<64"
5X	34	42	<69"



## Thyroid Protection

Don't forget to add an attached  
Standard Thyroid Collar.



Cat#	Lead type
TAR	Regular
TAL	Light Wt.
TAG	Lead Free

## FLEX GUARD APRONS

Front protection aprons with flexible stretch back that provides greater comfort by placing more weight on the hips and less weight on the shoulders. Wide shoulders to optimize weight distribution. Double-fold binding for strength and tear resistance. 0.5mm Pb equivalency protection. Free dual pocket to store an attached thyroid collar and separate pocket for other items. Concealed shoulder pads for extra comfort. Two year warranty on materials/workmanship. 40+ color options



Cat# FV\_

Shown w/optional **FREE**  
back strap add Cat# EMS



Cat# FB\_

Available in two styles:

♦ 2" Buckle Closure



Hook n Loop	Cat#	Lead type	petite small medium	large x-large	2X 3X	4X 5X
	FVR	Regular				
	FVL	Light Wt.				
	FVG	Lead Free				

Buckle	Cat#	Lead type	petite small medium	large x-large	2X 3X	4X 5X
	FBR	Regular				
	FBL	Light Wt.				
	FBG	Lead Free				

SIZE	WIDTH	LENGTH	FITS CHEST
Petite	18	30	<36"
Small	20	32	<40"
Medium	22	36	<44"
Large	24	38	<48"
X-Large	26	40	<52"
2X	28	40	<56"
3X	30	40	<60"
4X	32	42	<64"
5X	34	42	<69"



## Thyroid Protection

Don't forget to add an attached  
Standard Thyroid Collar.



Cat#	Lead type
TAR	Regular
TAL	Light Wt.
TAG	Lead Free





Shown in VET Yellow claw proof material, but is available in over 40 colors to choose from.

Perfect Economy Bundle Kit for transporting your protective gear from one facility to another. This bundle includes:

- One Econo Guard Apron with 1" buckle closure. .5mm Pb equivalent protection.
- a Matching Thyroid Collar .5mm Pb equivalent protection
- One Pair of Non-Prescription Sure Guard Glasses
- One Carrying Bag that matches your apron

Media Type	Cat #
Regular Lead	QBNDL-AE14R



**Choose your favorite color & size and your all set!**



Convenient tote for all your protective wear. Durable rip-stop nylon fabric with zippered closure. 28" long to minimize folding your aprons. EZ carry handle and shoulder strap included.

**Apron Tote Bag Only!**

Cat# ACB-28





Perfect Bundle Kit for transporting protective gear from one location to another. This bundle includes:

- One EZ Guard Apron with Hook and Loop Closure and .5mm Pb equivalent protection.
- One Matching Attached Thyroid Collar .5mm Pb equiv protection
- One Pair of Non-Prescription Power Guard Glasses
- One Carrying Bag that matches your apron
- One Apron & Glove Rack to store garments when not in use.
- One set of protective gloves. Your choice of Mittens or slitted Gloves.

Choose your favorite color and apron size and your all set!

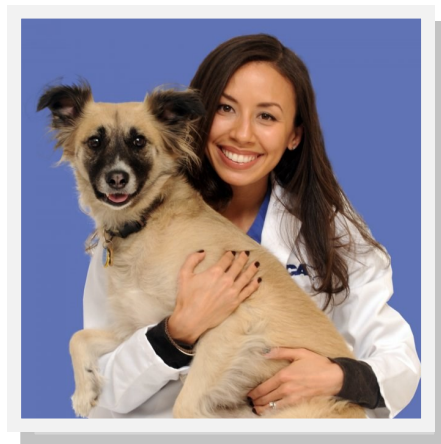
Shown in Vet Blue #V1 and Blue Paws #76 but over 40 colors available to choose.

#### With One Pair of Slitted Gloves

Media Type	Cat #
Regular Lead	QBNDL-VE14R
LTWT Lead	QBNDL-VE14L
LEAD FREE	QBNDL-VE14G

#### With One Pair of Protective Mittens

Media Type	Cat #
Regular Lead	QBNDL-VF14R
LTWT Lead	QBNDL-VF14L
LEAD FREE	QBNDL-VF14G



# PROTECTIVE APPAREL

fabric / color selections

## Nylon Solids

Liquid Repellent  
Light & Supple



11-Royal Blue



12-Navy



20-Green



21-Teal



22-Forest



23-Slate



33-Black



41-Sunshine



43-Orange



51-Red



52-Hot Pink



53-Purple



54-Berry



55-Burgundy



56-Brown

## Colorful Prints

Liquid Repellent  
Medium Weight



70-Blue Plaid



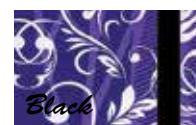
71-Leopard



72-Lots•O•Dots



73-Sleepy Sheep



77-Life Vines



78-Waterfall



83-Cool Waves



82-Pink Camo



86-Camo Night



85-Digital Camo



94-Big Dipper



95-Andromeda



74-Playful Pups



76-Blue Paws



80-Red Paws

(Prints are shown **SMALLER** than actual size)

## Diamond Ripstop

Medium Weight Nylon  
Filament Reinforced



61-Sapphire



62-Ruby



63-Emerald



64-Onyx



65-Amethyst

## Feather Ripstop

Light Weight Nylon  
Filament Reinforced



R701-Royal Blue



R702-Red



R703-Forest



R704-Black



R705-Chocolate



R706-Navy



R707-Burgundy



R708-Kelly



R709-Charcoal



R710-Gray

## Natura

Smooth, Soft, Flexible  
with a Natural Feel



N911-Stratos



N921-Ocean



N933-Midnight

- "White" and "Black" denote the default embroidery color.
- The Black and Gray lines denote the default binding trim color.



# ***PROTECTION FOR YOUR HANDS***

## ***Veterinary Market***

The Veterinary Market may receive some of the highest doses of radiation to the hand because of the frequent holding of pets during imaging. Chronic irradiation of the hands is a principle concern.

**NIOSH:** *The National Institute for Occupational Safety and Health guidelines state that No Part of the body should be directly exposed to radiation. If there is a danger of exposing a body part, that Appropriate Protection must be used.*

Shield hands from the harmful effects of exposure by using a full 360 degree protection as shown below.

### **NEW HAND GUARD MITTENS**

Techno-Aide's open palm hand shield is an inexpensive solution for improved control and excellent dexterity. You can even pick up a paperclip with ease.

Durable, comfortable and easy to use. These mittens feature one inch polypropylene webbing for thumb and fingers and hook and loop closure at wrist.

Great for working with small animals, especially wildlife. One size fits most. Appropriate for both men and ladies hands.

Mitten is 12.5" long and 9.5" wide in the center. 5" wide at wrist. Hook and loop strap is 10.5" long.

Regular Lead providing 0.5mm Pb Equiv Protection.

**CAT# QHSRP**    **your choice of color)**



# ***PROTECTION FOR YOUR HANDS***

## ***Veterinary Market***

The Veterinary Market may receive some of the highest doses of radiation to the hand because of the frequent holding of pets during imaging. Chronic irradiation of the hands is a principle concern.

**NIOSH:** The National Institute for Occupational Safety and Health guidelines state that No Part of the body should be directly exposed to radiation. If there is a danger of exposing a body part, that **Appropriate Protection** must be used.

Shield hands from the harmful effects of exposure by using a full 360 degree protection as shown below.

### **Palm Guard Radiation Protective Mittens**

Flexible for grasping and holding animals during imaging. Colorful fabric on one side and soft touch neutral on the palm side. 0.5mm Pb equivalency.

**CAT# QMGP** (your choice of color)



### **Hand Guard Radiation Protective Gloves**

Five fingered protection for full dexterity. 0.5mm Pb equivalency dip molded core. Durable, soft navy vinyl covering. 15"



### **Palm Guard Radiation Protective Mittens**

Full palm protection with thumb extension for grip. 0.5mm Pb equivalency dip molded core. Durable, soft vinyl covering. 15"

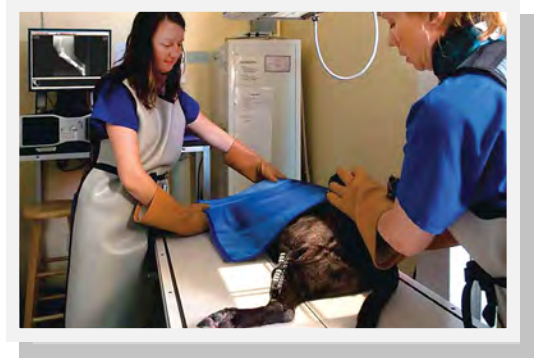
**Cat# QPSP with palm slit (Navy Blue)**



## Omni Blankets: Protective Flexible Weighted Shield

Used over patient or animal or equipment to protect from radiation exposure. Used underneath an animal, prevents scatter radiation. 0.5mm Pb equiv. protection.

Cat#	Lead type	Small	Medium	Large	X-Large
OMR	Regular				
OML	Light Wt.				
OMG	Lead Free				



**Choose your favorite color**

## SURE GUARD

The eyes are one of the most sensitive areas of the body, and are one of the most vulnerable to radiation. Safeguard them from damage by using high-quality **lead glasses** for each and every x-ray procedure. These radiation protection lead glasses come standard with .75mm Pb equivalent lenses offering you superior protection from scatter radiation.

- Stylish design for medium size faces
- Regular hinges & wrap around frame

Pr

CE  
0120



Premium case  
Weight 63 grams

	RED	BLACK	SILVER	BLUE
Non-prescription	LER-6RPL	LER-6KPL	LER-6SPL	LER-6BPL
Single Vision	LER-6RSV	LER-6KSV	LER-6SSV	LER-6BSV
Bifocal	LER-6RBI	LER-6KBI	LER-6SBI	LER-6BBI
Progressive	LER-6RPR	LER-6KPR	LER-6SPR	LER-6BPR

- Rubber ultra-soft fixed nose piece
- Impact resistant polycarbonate frame

## POWER GUARD

Protection for your Eyes:

Sporty look with padded bridge and Temple. Soft colored end piece for comfort and fit. Large Lens for great coverage. Comes with a premium case. Weight 64 grams. Frame is Impact resistant polycarbonate



			
Non-prescription	LER-PBPL	LER-PSPL	LER-PKPL
Single Vision	LER-PBSV	LER-PSSV	LER-PKSV
Bifocal	LER-PBBI	LER-PSBI	LER-PKBI
Progressive	LER-PBPR	LER-PSPR	LER-PKPR

CE  
0120



# COVER GUARD

## Protection for your Eyes:



The eyes are one of the most sensitive areas of the body, and are one of the most vulnerable to radiation. Safeguard them from damage by using high-quality lead glasses for each & every x-ray procedure. We remind medical facilities to take the necessary steps to protect your medical personnel and patients by implementing the use & wear of radiation glasses for your imaging facility. These radiation protection lead glasses come standard with .75mm Pb equivalent lenses in front and .35mm Pb equivalent lateral protection. These glasses can offer good protection to the eye under clinically relevant conditions.

Ships at 1 lb (5" x 7" x 7")

- Designed to fit over prescription eyewear.
- Comfortable, lightweight, and durable.
- .35mm Side Shield protection.
- Regular hinges with molded nose piece.
- Distortion-Free SF-6 Schott glass radiation-reducing lenses.
- Constructed of high impact TR-90 Black Rubberized Nylon
- Premium case

	BLACK	WHITE	TORTOISE
Non-prescription	LES—CKPL	LES-CWPL	LES-CTPL
Single Vision	LES—CKSI	LES-CWSI	LES-CTSI
Bifocal	LES—CKBI	LES-CWBI	LES-CTBI
Progressive	LES—CKPR	LES-CWPR	LES-CTPR



Certified protection. Exceeds ASTM F803 standards. Our most advanced eye rim frame and fit technology.



**Regulation 1910.132(a) Requires glasses to be worn near radiological hazards.**

It is certified that the manufacturers technical file and the PPE product detailed has been assessed and found to be in accordance with EC Directive 89/686/EEC.

Certificate #GB14/92290, GB14/92291



Wall plate is 28" x 8". Arms are approx. 29" long from the base.



Cat# ARW-L5

Cat# ARW-R5



Cat# ARW-10

Cat# ARP-06



6 Peg will hold 3 aprons 28" x 6"



Cat# ARP-02

Cat# ARP-08



8 Peg will hold 4 aprons 28" x 6"



Cat# AGR-110



Cat# AGR-115



Cat# AGR-105

Cat# ARM-ZNH

Z-Base Mobile Apron Rack. Heavy duty casters on 12 G steel base. Chromed steel posts and hang bar. 60" long x 60" tall bar allowing hanging without creasing. Ships at 35 lbs.



Cat# ARM-Z10

Z-Base Mobile Apron Rack. Heavy duty casters on 12 G steel base. Chromed steel posts and hang bar. 60" long x 60" tall bar allowing hanging without creasing. **Comes with Ten Hangers**



Cat# ARH-01 Single Apron Hanger

# NEW Mobile Lead Barrier Colors!



Bring a full 2.0mm Pb Equivalency of radiation protection anywhere you need it with our full body mobile protective barriers. Transparent/clear upper section of protective leaded glass; Opaque lower section of solid leaded x-ray protection. Locking smooth caster system for easy mobility. Easy to clean. Default color is Neutral.

## Choose Your Size:



<b>Leaded Glass:</b>	30"W x 24" H	30"W x 36"H	30"W x 48"H	30"W x 60"H	30"W x 24"H	48"W x 30"H	48"W x 36"H	72"W x 36"H	30"W x 22"H
<b>Opaque Panel:</b>	30"W x 48"H	30"W x 39"H	30"W x 22"H	30"W x 12"H	30"W x 22"H	48"W x 42"H	48"W x 36"H	72"W x 36"H	30"W x 56"H
<b>Overall Size:</b>	33"W x 75"H	33"W x 75"H	33"W x 75"H	33"W x 75"H	34"W x 46"	51"W x 75"H	51"W x 75"H	75"W x 75"H	34"W x 78"H
<b>Ships @</b>	450 lbs	450 lbs	450 lbs	450 lbs	450 lbs	650 lbs	650 lbs	700 lbs.	425 lbs.
<b>Protects:</b>	1-2 people	1-2 people	1-2 people	1-2 people	1-2 people	2-3 people Patient on stretcher	2-3 people Patient on stretcher	3-4 people Patient on stretcher	1 person

**Custom Barriers  
Available**

## Choose Your Color:



Add \$125 to List Price



**Crated for Secure Shipment**

\*Worldwide shipping by air, ground or sea freight

**Leaded Glass panels by Schott, the world  
leader in protection and quality!**

\*adds 2-3 weeks additional lead time.  
Barriers with color are non-returnable.





# NEW Mobile Lead Barrier Colors!



Bring a full 2.0mm Pb Equivalency of radiation protection anywhere you need it with our full body mobile protective barriers. Transparent/clear upper section of protective leaded glass; Opaque lower section of solid leaded x-ray protection. Locking smooth caster system for easy mobility. Easy to clean. Window center is 60" from the bottom of the panel. Default color is Neutral.

## Choose Your Size:



<b>Leaded Glass:</b>	10"W x 12" H	10"W x 12" H	10"W x 12" H	10"W x 12" H	10"W x 12" H
<b>Overall Size:</b>	24"W x 72"H	30"W x 72"H	36"W x 72"H	24"W x 84"H	30"W x 84"
<b>Ships @</b>	350 lbs	450 lbs	450 lbs	450 lbs	450 lbs
<b>Protects:</b>	1 person	1-2 people	2 people	1 person	1-2 people

**Custom Barriers  
Available**



**Just let us know  
What you need!**

## Choose Your Color:



Add \$125 to List Price



**Crated for Secure Shipment**

\*Worldwide shipping by air, ground or sea freight

**Leaded Glass panels by Schott, the world  
leader in protection and quality!**

\*adds 2-3 weeks additional lead time.  
Barriers with color are non-returnable.



# STANDARD MOBILE SHIELDS



- 0.5mm Pb Equivalency
- Regular & Lead Free Media Options
- 5-Star Base with Chrome Post
- Choose your **Color Fabric**
- Adjustable Heights 36" to 60"



## .5mm Solid Panel Regular Lead Shield

Cat #	Width x Height
LPS-S2424	24 x 24
LPS-S2436	24 x 36
LPS-S2448	24 x 48

## .5mm Solid Panel Lead Free Shield

Cat #	Width x Height
LPSG-S2424	24 x 24
LPSG-S2436	24 x 36
LPSG-S2448	24 x 48

Manufactured in an  
**FDA**  
Registered Facility



Lead Blockers maximize efficiency and optimize use of imaging. Divides receptor for multiple exposures. Covered with blue vinyl laminate. 1mm lead equiv.

Cat#	Blocker size	Fits imaging receptor
FLB-58	5" X 8"	8 X 10
FLB-52	5" X 12"	10 X 12
FLB-61	6" X 10"	10 X 12
FLB-71	7" X 11"	11 X 14
FLB-77	7" X 17"	14 X 17
FLB-78	SET OF ALL 5	

# HEY

## DID YOU KNOW...



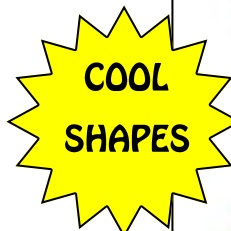
"Each radiograph **MUST** include an appropriate marker that clearly identifies the patient's right (R ) and Left (L) side. Medico-legal requirements mandate that these markers be present. R and L markers must be used with CR and DR digital imaging. The development of digital imaging and the use of CR and DR have enabled an environment in which the R and L markers can be placed on the image electronically. This is NOT recommended because of the great potential for error and legal implications. Anatomic markers should be placed on the CR cassette or DR table similar to screen-film cassettes. *Reference: Merrill's Atlas of Radiographic Positioning and Procedures, 9780323073219, text extract.*



### Order Yours Today!



CP-37



PT-SKW:

PT-FRB:





NEW! A **Reusable Sticky Strip** that you simply peel off the protective film and apply to the back of your x-ray markers. Stays in place without all the sticky residue. No more need for tape.

“Mates” are 1.5”L x .75”w , come in one pack of 2 easy peel “Mates” that will fit all your Techno-Aide Markers. Can be cut down to size for special shape markers. One set of “mates” last approximately 30 days.

**In stock and can ship Next Business Day!**

MM-XRAY	Qty: 1 SET	\$2.00
MM-XRAY10	QTY: 10 SETS PER BAG	\$20.00
MM-XRAY25	Qty: 25 SETS PER BAG	\$50.00

**\$6.95 SHIPPING FOR ANY OF THE ABOVE QTY'S**



# Animal Transporters

Safe and easy way to transport animals that are sick or injured. Flexible style rolls up for easy storage. Easy to clean and disinfect.

**RUGGED CONSTRUCTION:** Made of automotive grade reinforced vinyl. Buckle closure on 2" webbing straps/ NO Hook & Loop to accumulate fur and dander! Includes six handles made of 1" webbing. 1" webbing extends underneath for added strength.



**SMALL  
QATS-30**



**MEDIUM  
QATM-39**



**LARGE  
QATL-48**

**Custom  
Sizes are  
Also  
Available**





# SIGNS

YELLOW  
Cat# npv-09e

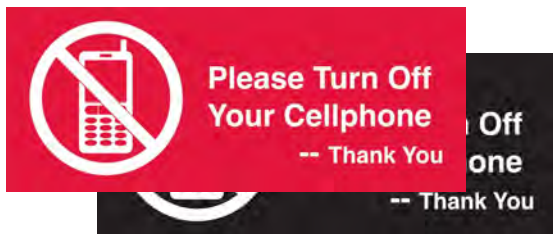
- Constructed of 1/18" thick Trovicel
- Double Faced tape is attached to the back of each sign for easy mounting.
- Large signs are 8" x 10"
- Small signs are 4" x 10"



RED Cat# CXR-13R  
Black Cat# CXR-13B



RED Cat# XRR-19R  
Black Cat# XRR-19B



RED Cat# NCP-24R  
Black Cat# NCP-24B



YELLOW Cat# CRA-15



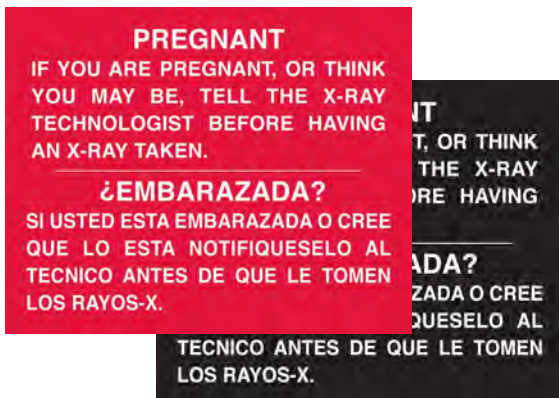
YELLOW Cat# CRA-16



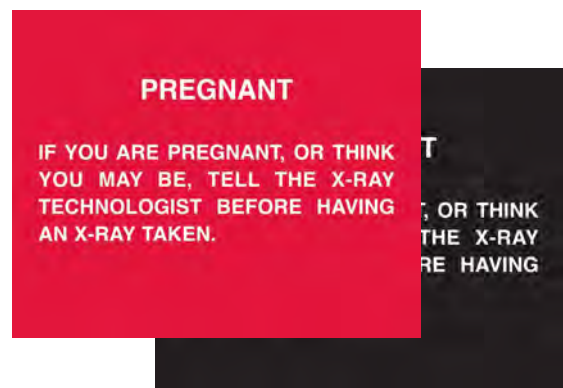
YELLOW  
Cat# CRA-17



YELLOW  
Cat# CRA-18



RED Cat# PS-08ER  
Black Cat# PS-08EB



RED Cat# PS-06ER  
Black Cat# PS-06EB





## Imaging Receptor Covers

### STOP AND PROTECT YOUR INVESTMENT.

Perfect for veterinary offices where there is a risk of urine and feces getting on imaging receptors. Accidents happen and it's important to keep your receptors clean and protect Your Investment! These covers also help aid in avoiding cross-contamination and the spread of germs. These disposable covers are designed for Imaging Receptors. Available in several sizes to meet your needs.



**Next-Day Delivery  
Available**

- ◆ Heavy duty and leak-proof
- ◆ Keeps receptors clean and dry from blood, bodily fluids, solutions & infectious diseases
- ◆ Specially designed to fit your imaging receptor
- ◆ Non-Sterile 2mil polyethylene is transparent to x-ray
- ◆ Available in Standard Overlock & Ziplock™ Secure Closure

These have artifacts!



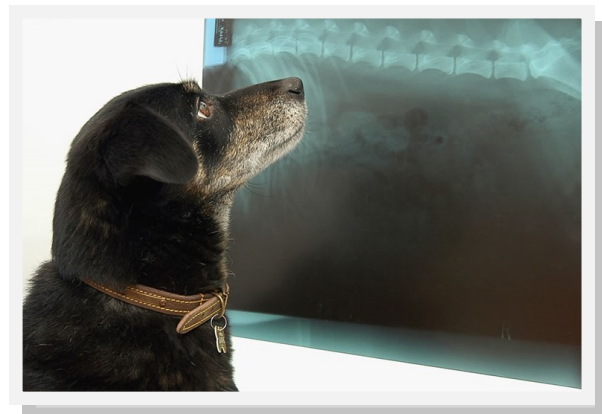
Choose Techno-Aide Artifact Free Bags!



Cat#	size of cover	for sizes	style	qty
CCS-08	10" x 13"	8" X 10"	overlock	100
CCS-10	10" x 13"	8" X 10"	overlock	500
CCM-10	12.5" x 15"	10" X 12"	overlock	100
CCM-12	12.5" x 15"	10" X 12"	overlock	500
CCL-14	17.5" x 20.5"	14" X 17"	overlock	100
CCL-17	17.5" x 20.5"	14" X 17"	overlock	500
CCC-DR	21" x 21"	20" X 20"	overlock	100
CCD-DR	21" x 21"	19" X 19"	overlock	500
CCXL-24	24" x 26"	23" X 25"	overlock	100
CCXL-26	24" x 26"	23" X 25"	overlock	500
CCZ-14	17.5" x 20.5"	14" X 17"	Ziplock	100
CCZ-17	17.5" x 20.5"	14" X 17"	Ziplock	500
CCXZ-24	24" x 26"	23" X 25"	Ziplock	100
CCZX-26	24" x 26"	23" X 25"	Ziplock	500

### 4Mil for Extra Strength

CCH-24	24" x 26"	23" X 25"	Ziplock	100
CCH-26	24" x 26"	23" X 25"	Ziplock	500



# Radiation Badge Boards

Provides a central location for all badge related activity. Exposure record display area and note clip included. Accommodates different styles and sizes of badges. Ring board is also available for Nuclear Medicine and PET.



FLB-10N  
12" x 5"  
Holds 10 Wide  
Badges



FLB-20N  
12" x 9.25"  
Holds 20 Narrow  
Badges



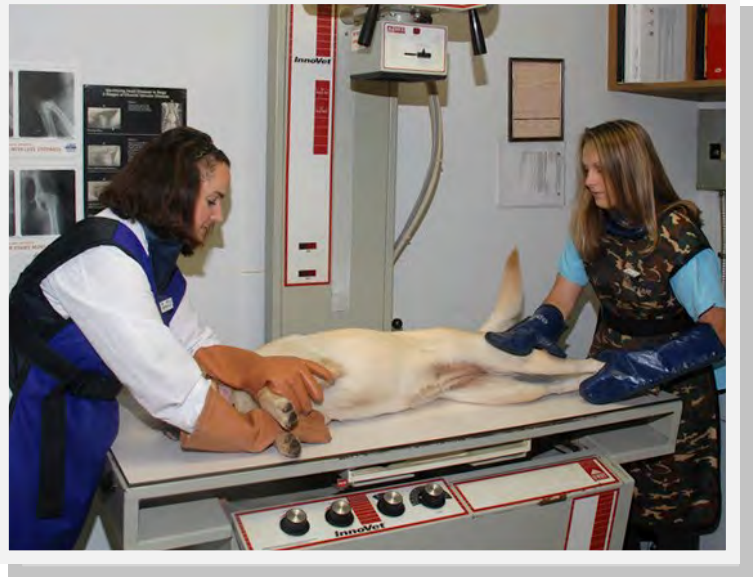
FLB-10W  
12" x 9.25"  
Holds 10 Wide  
Badges



FLB-20W  
12" x 18"  
Holds 20 Wide  
Badges



FLB-20N  
12" x 18"  
Holds 20 Narrow  
Badges





X-Ray Storage Boxes  
Cat# ETZ-70

# XRAY STORAGE BOXES

...a low cost durable solution

- Ideal for archiving & moving files
- Great for temporary storage
- Can be stacked without crushing
- One piece, easy fold assembly
- Strong and durable
- Each box 6.25" x 16" x 19.5"
- Accommodates 14" x 17" files (approximately 1250 x-rays)
- Horizontal or Vertical filing
- Sold in case lots: 15 box per case



Caliper  
Cat# CAL-21



If there is something that you still need that is not seen here in this PDF, please give us a call . .



1789 Notre Dame Drive, Unit 103  
St. Agatha, ON N0B 2L0  
PH: 519-885-3254  
[www.calicomedical.com](http://www.calicomedical.com)

Manufactured in an  
**FDA**  
Registered Facility

